



Pleated
Trumpet
Sleeves

Crimson



RUFFLED WING TOP

Fabric:
American Crepe

Size:
38 (M) • 40 (L) • 42 (XL)

Length: 23+



WEARING STYLE-2
Round Neck

LATEST FASHION • HI-QUALITY • LOWEST PRICE



Pleated
Trumpet
Sleeves

Crimson



RUFFLED WING TOP

Fabric:
American Crepe

Size:
38 (M) • 40 (L) • 42 (XL)

Length: 23+



WEARING STYLE-2
Round Neck

LATEST FASHION • HI-QUALITY • LOWEST PRICE

WEARING STYLE-1
Round Neck

Honey Yellow

WEARING STYLE-2
Off Shoulder

Velvet Red



Pleated
Trumpet
Sleeves



RUFFLED WING TOP

Fabric:
American Crepe

Size:
38 (M) • 40 (L) • 42 (XL)

Length: 23+

LATEST FASHION • HI-QUALITY • LOWEST PRICE

Pleated
Trumpet
Sleeves

Olive Green



RUFFLED WING TOP

Fabric:
American Crepe

Size:
38 (M)
40 (L) • 42 (XL)

Length: 23+



LATEST FASHION • HI-QUALITY • LOWEST PRICE



WEARING STYLE-2
Round Neck

Pine Green



Pleated
Trumpet
Sleeves

RUFFLED WING TOP

Fabric:
American Crepe

Size:
38 (M) • 40 (L) • 42 (XL)

Length: 23+

LATEST FASHION • HI-QUALITY • LOWEST PRICE

RUFFLED WING TOP

Velvet Red



Steel Grey



Copper



Crimson



Olive Green



Wildberry



Pine Green



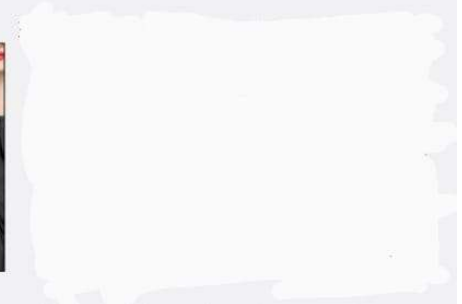
Honey Yellow



Mint Green



Black



Olive
Green