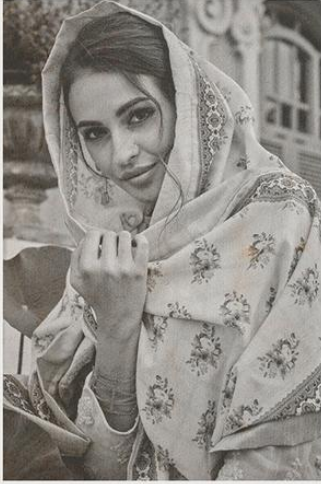


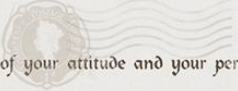
A woman with dark hair and red earrings is wearing a red and gold Lakhnavi outfit. She is sitting on a ledge in front of a building with white columns and blue shutters. The outfit consists of a long-sleeved tunic with a high collar and a matching shawl with a wide border. The fabric is heavily embroidered with gold thread in a repeating geometric pattern. The shawl has a wide border with a floral and paisley design. The woman is also wearing a gold ring and a gold bracelet.


SAJAWAT
CREATION

LAKHNAVI
VOL-2


SAJAWAT
CREATION




Style is a reflection of your attitude and your personality.





1081



1082



1083



1084



1085



1086

SAJAWAT
CREATION

LAKHNAVI
VOL-2





SAJAWAT
CREATION

Style is a way to say who you are without having to speak.

1086



Elegance & sophistication create a charming symphony.





Fashion is everything that can pass fashionable.

1085



SAJAWAT
CREATION

Fashion design gives you an opportunity express how you feel





Dictate your style statement with the season's latest trends. 1082

Elegant & classic do fashion as the romance do.



SAJAWAT
CREATION



This season look up with some truly inspiring and elegantly.

1081

