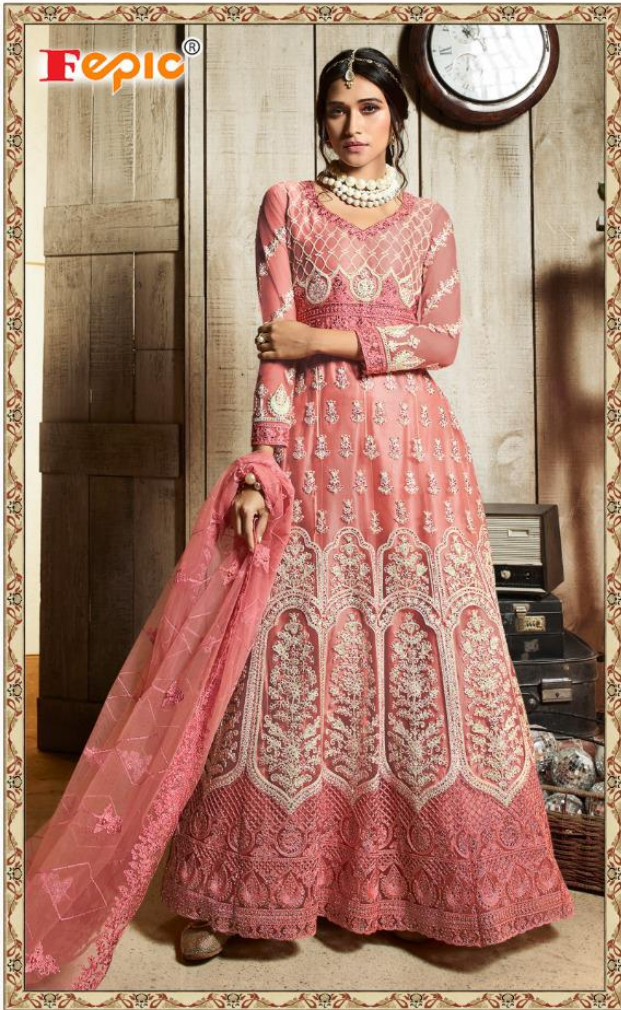


A woman with dark hair and a bindi is standing in front of a rustic wooden wall. She is wearing a long, green, lace-trimmed dress with a sheer overlay and a matching dupatta. She is also wearing a necklace and earrings. The background is a wooden wall with a sun-like decoration on the left and a wooden chest on the right.

Epic®

ROSEMEEN

• *Shehzadi* •



D.NO.85001

WASHING INSTRUCTIONS

DO NOT USE ANY TYPE OF BLEACH OR STAIN REMOVING CHEMICALS
BEFORE CUTTING / STITCHING, FABRIC SHOULD BE SOAKED IN WATER
(ALL COMPONENTS SEPARATELY) FOR 15 MINUTES
DO NOT KEEP WET FABRIC IN TWISTED FORM IN ORDER TO AVOID COPY MARKS !
WASH COLOURED AND WHITE FABRICS SEPARATELY
IRON CLOTHES AT MODERATE TEMPERATURE ! DO NOT DRY FABRIC IN DIRECT SUNLIGHT
(EXTRA LACES, HANGINGS AND ACCESSORIES ARE NOT INCLUDED)



QR

ROSEMEEN

Shahzadi



D.NO.85002

WASHING INSTRUCTIONS

DO NOT USE ANY TYPE OF BLEACH OR STAIN REMOVING CHEMICALS
 BEFORE CUTTING / STITCHING , FABRIC SHOULD BE SOAKED BE SOAKED IN WATER
 (ALL COMPONENTS SEPARATELY) FOR 15 MINUTES
 DO NOT KEEP WET FABRIC IN TWISTED FROM IN ORDER TO AVOID COPY MARKS !
 WASH COLOURED AND WHITE FABRICS SEPARATELY
 IRON CLOTHES AT MODERATE TEMPERATURE ! DO NOT DRY FABRIC IN DIRECT SUNLIGHT
 (EXTRA LACES, HANGINGS AND ACCESSORIES ARE NOT INDUDED)



QR

ROSEMEEN

Shehzadi



D.NO.85003

WASHING INSTRUCTIONS

DO NOT USE ANY TYPE OF BLEACH OR STAIN REMOVING CHEMICALS
BEFORE CUTTING / STITCHING , FABRIC SHOULD BE SOAKED BE SOAKED IN WATER
(ALL COMPONENTS SEPARATELY) FOR 15 MINUTES
DO NOT KEEP WET FABRIC IN TWISTED FROM IN ORDER TO AVOID COPY MARKS !
WASH COLOURED AND WHITE FABRICS SEPARATELY
IRON CLOTHES AT MODERATE TEMPERATURE ! DO NOT DRY FABRIC IN DIRECT SUNLIGHT
(EXTRA LACES, HANGINGS AND ACCESSORIES ARE NOT INDUDED)



QR

ROSEMEEN

Shehzadi



D.NO.85004

WASHING INSTRUCTIONS

DO NOT USE ANY TYPE OF BLEACH OR STAIN REMOVING CHEMICALS
BEFORE CUTTING / STITCHING, FABRIC SHOULD BE SOAKED IN WATER
(ALL COMPONENTS SEPARATELY) FOR 15 MINUTES
DO NOT KEEP WET FABRIC IN TWISTED FORM IN ORDER TO AVOID COPY MARKS !
WASH COLOURED AND WHITE FABRICS SEPARATELY
IRON CLOTHES AT MODERATE TEMPERATURE ! DO NOT DRY FABRIC IN DIRECT SUNLIGHT
(EXTRA LACES, HANGINGS AND ACCESSORIES ARE NOT INCLUDED)



QR

ROSEMEEN

Shehzadi



D.NO.85005

WASHING INSTRUCTIONS

DO NOT USE ANY TYPE OF BLEACH OR STAIN REMOVING CHEMICALS
BEFORE CUTTING / STITCHING, FABRIC SHOULD BE SOAKED BE SOAKED IN WATER
(ALL COMPONENTS SEPARATELY) FOR 15 MINUTES

DO NOT KEEP WET FABRIC IN TWISTED FROM IN ORDER TO AVOID COPY MARKS !

WASH COLOURED AND WHITE FABRICS SEPARATELY

IRON CLOTHES AT MODERATE TEMPERATURE ! DO NOT DRY FABRIC IN DIRECT SUNLIGHT
(EXTRA LACES, HANGINGS AND ACCESSORIES ARE NOT INDUDED)



QR

ROSEMEEN

Shehzadi



D.NO.85001



D.NO.85002



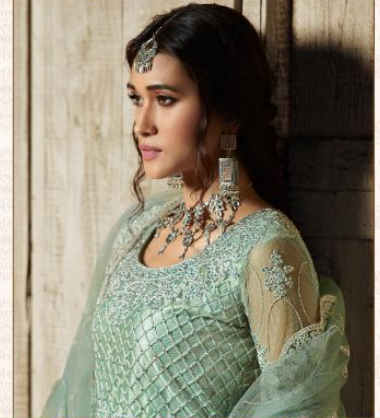
D.NO.85003



D.NO.85004



D.NO.85005



Fepic®

ROSEMEEN
Shehzadi

Instagram: [@_Fepic](#)

Facebook: [Fb.com/Fepic11](#)