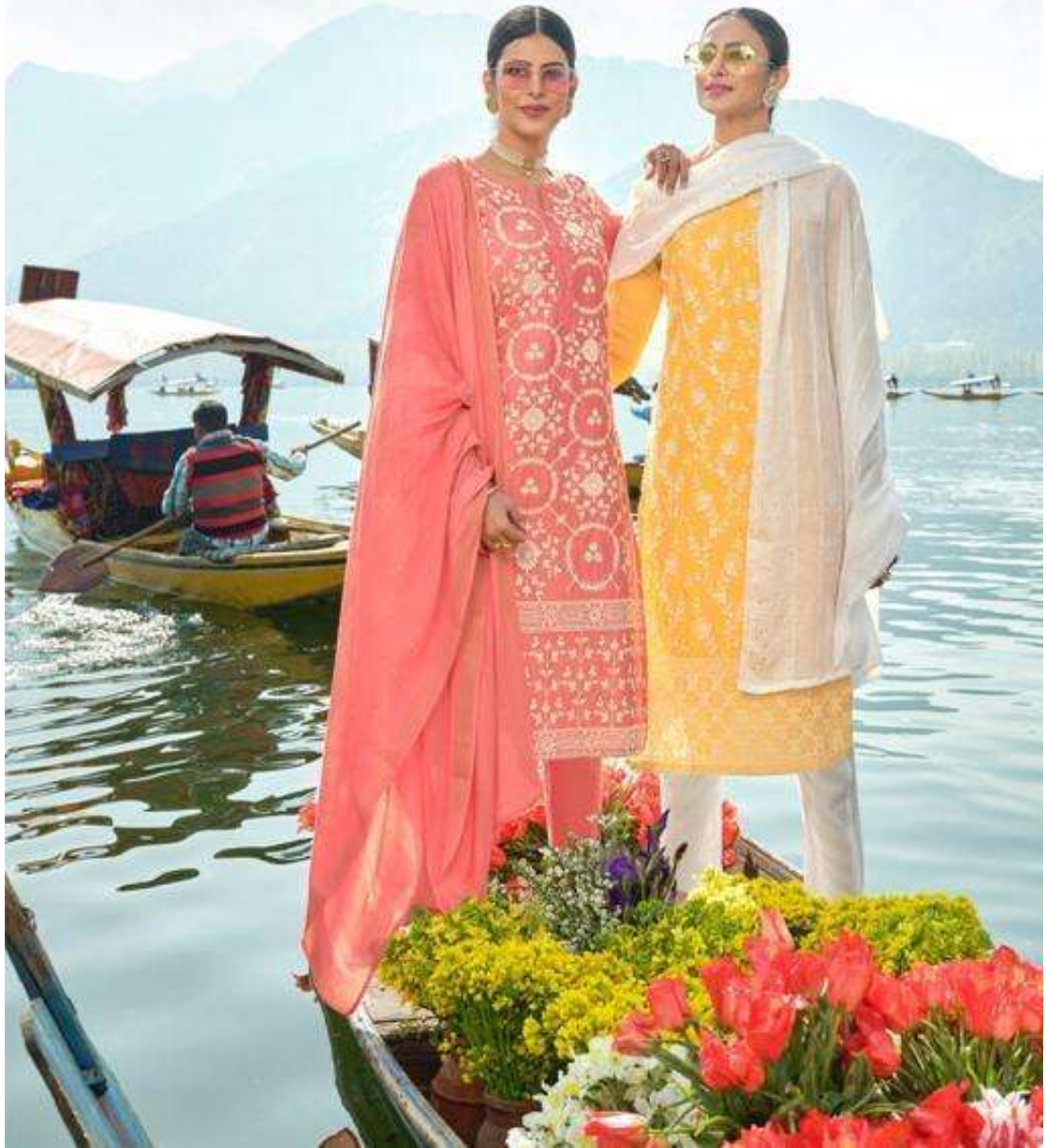


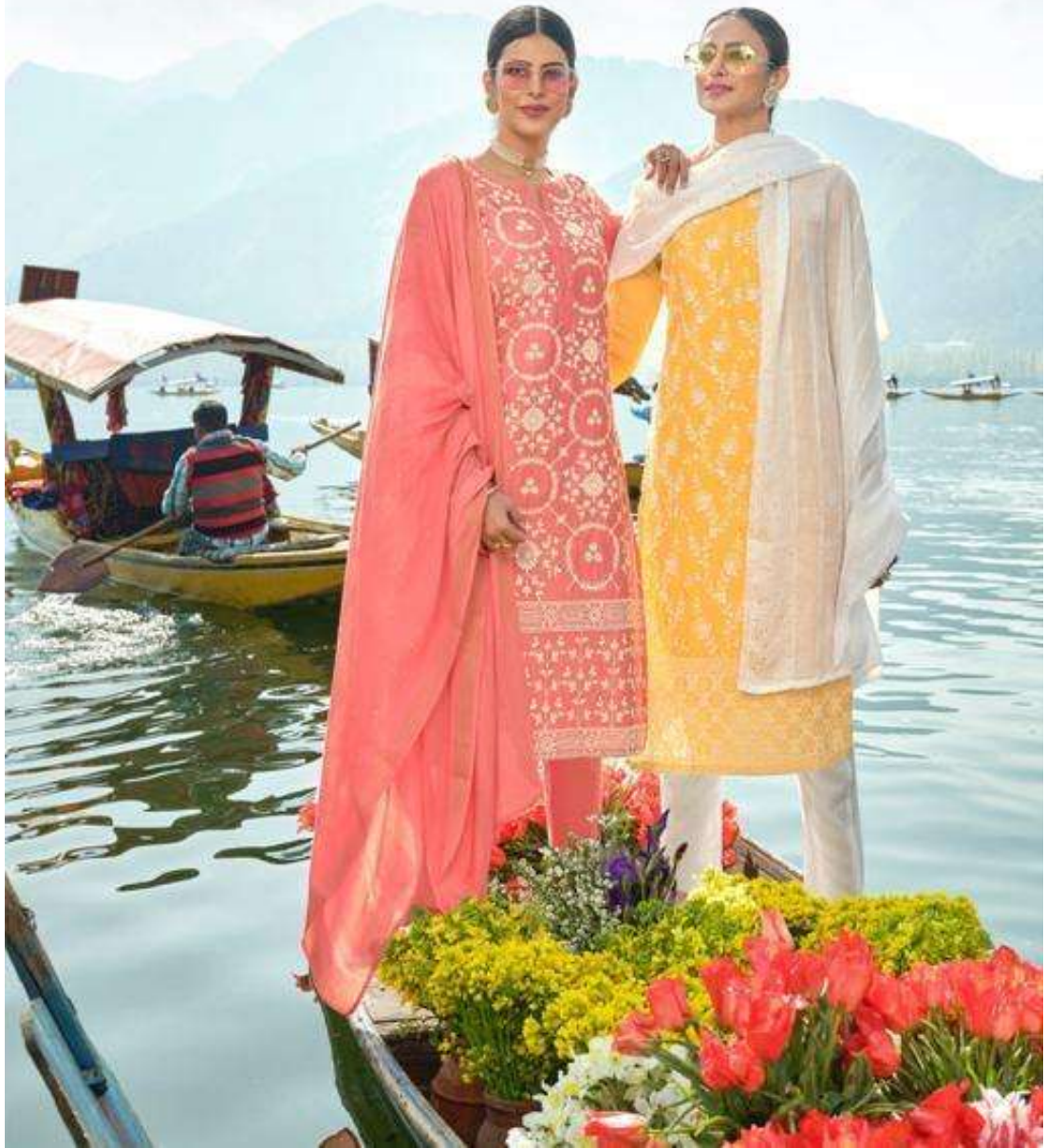
SHUBH<sup>nx</sup>

# लखनवी



SHUBH<sup>nx</sup>

# लखनवी



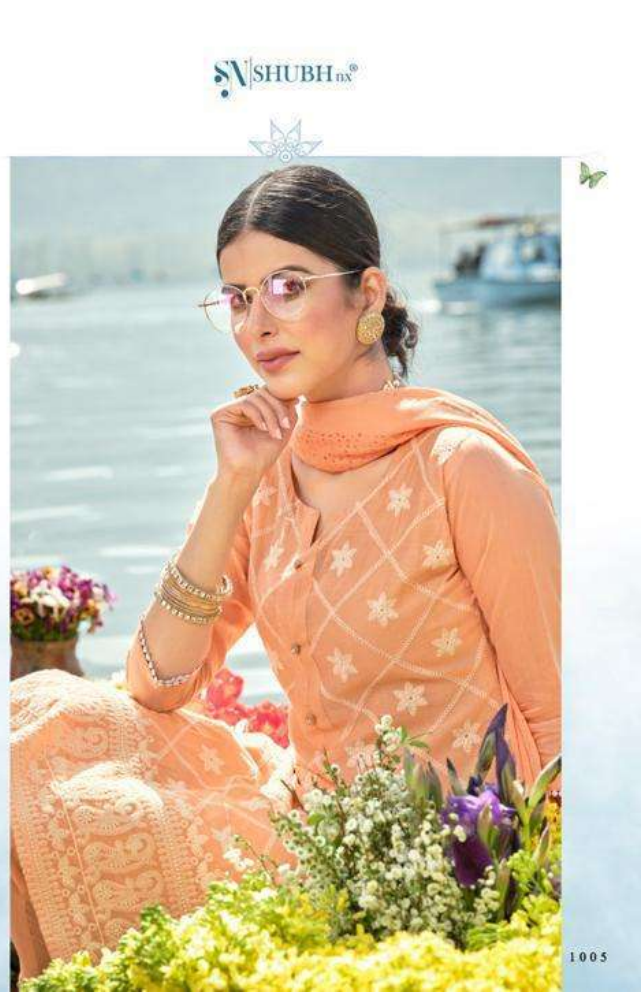


SHUBH<sup>mx</sup>

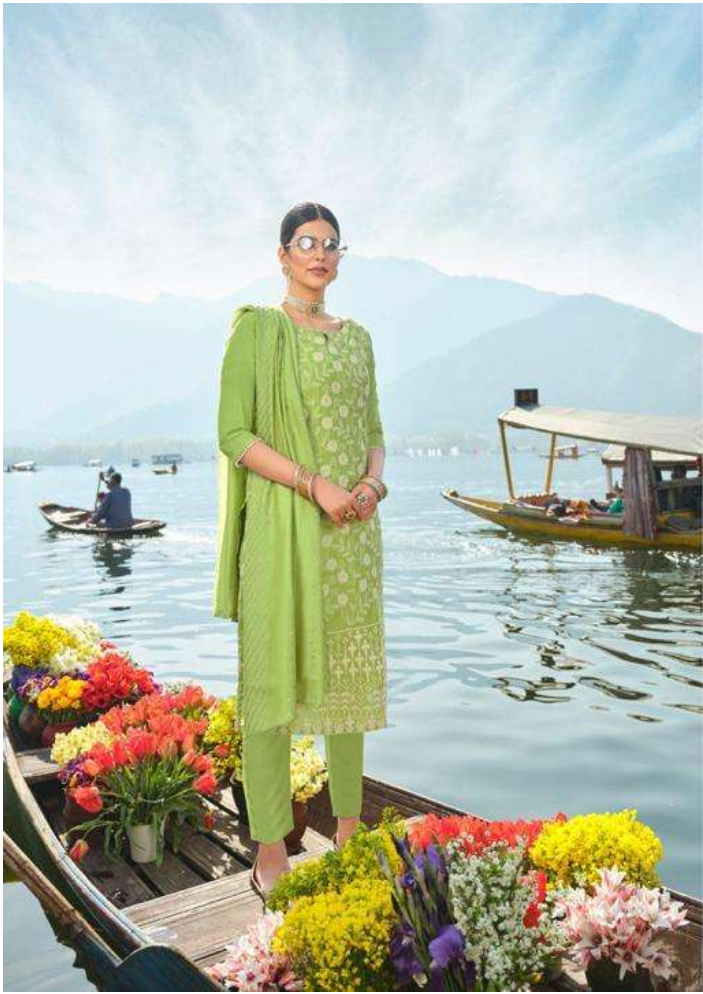


1003









SV SHUBH®



1004



1006

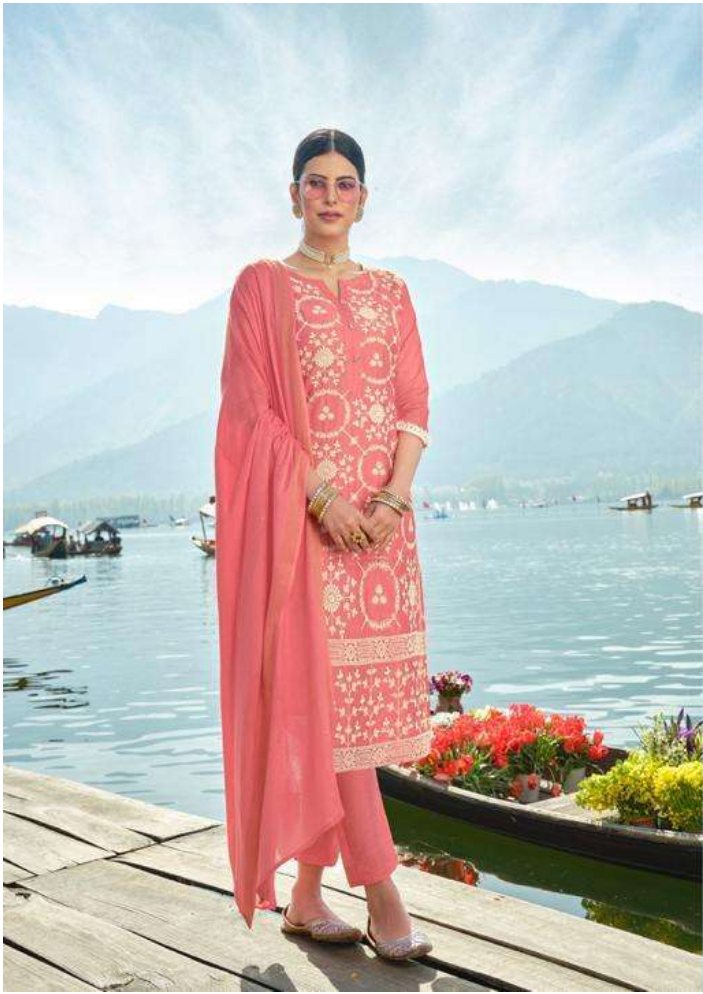


SHUBH<sup>nx</sup>

"I really believe that a woman shouldn't just have to dress like a man to feel strong."











SV SHUBH<sub>INX</sub>



Eternal Style

SHUBH.in







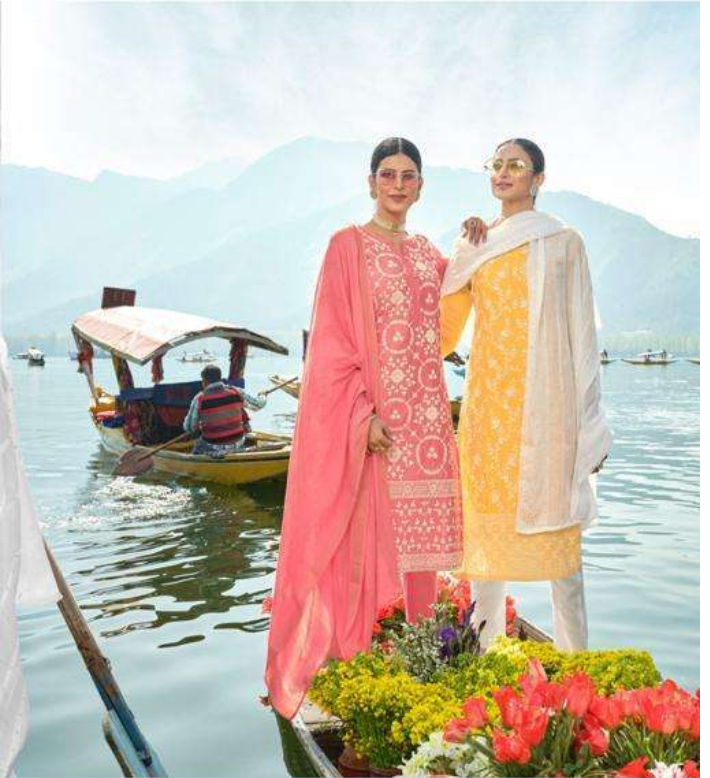
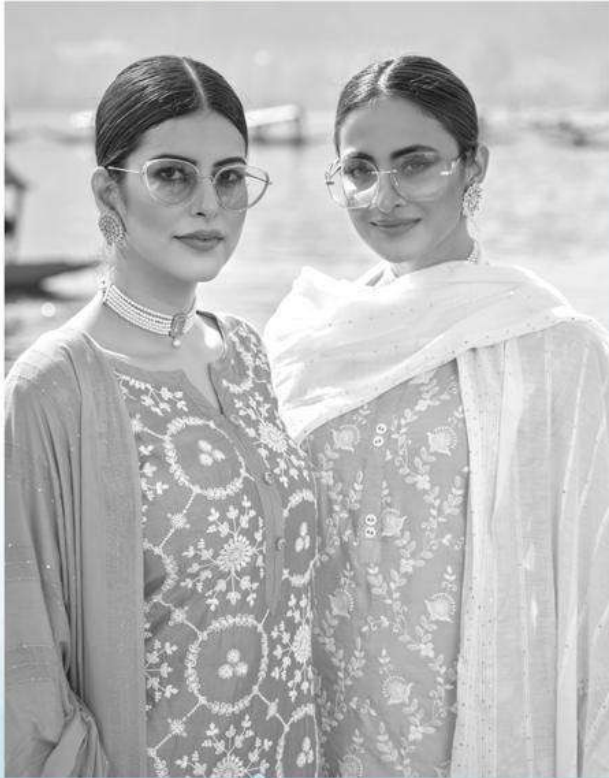


SV SHUBH<sup>ns</sup>

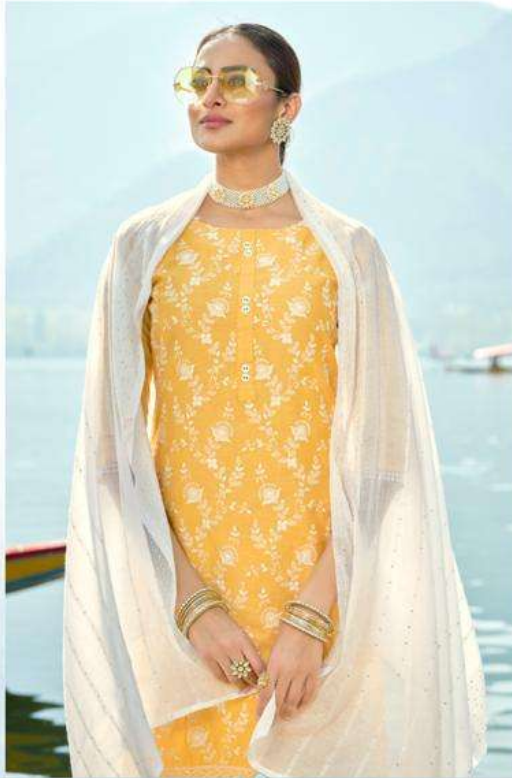
"When I'm designing, it has to mean something to me,  
otherwise, it's just clothes."







"People, when they say 'streetwear,' they miss the central component, which is that it's real people, it's clothes that are worn on the street."







1001



1002



1004



1005



1003



1006

SHUBH<sub>INX</sub>

लखनवी