

A woman with long, dark, wavy hair is the central figure. She is wearing a bright yellow, long-sleeved dress with a subtle white floral embroidery on the bodice. Her accessories include large, round, light-colored hoop earrings and a multi-strand beaded bracelet on her right wrist. She is looking towards the camera with a slight smile. To her right is a large green plant with long, feathery leaves. The background is a textured, light-colored wall. The entire image is framed by a thin black line.

N O R A H

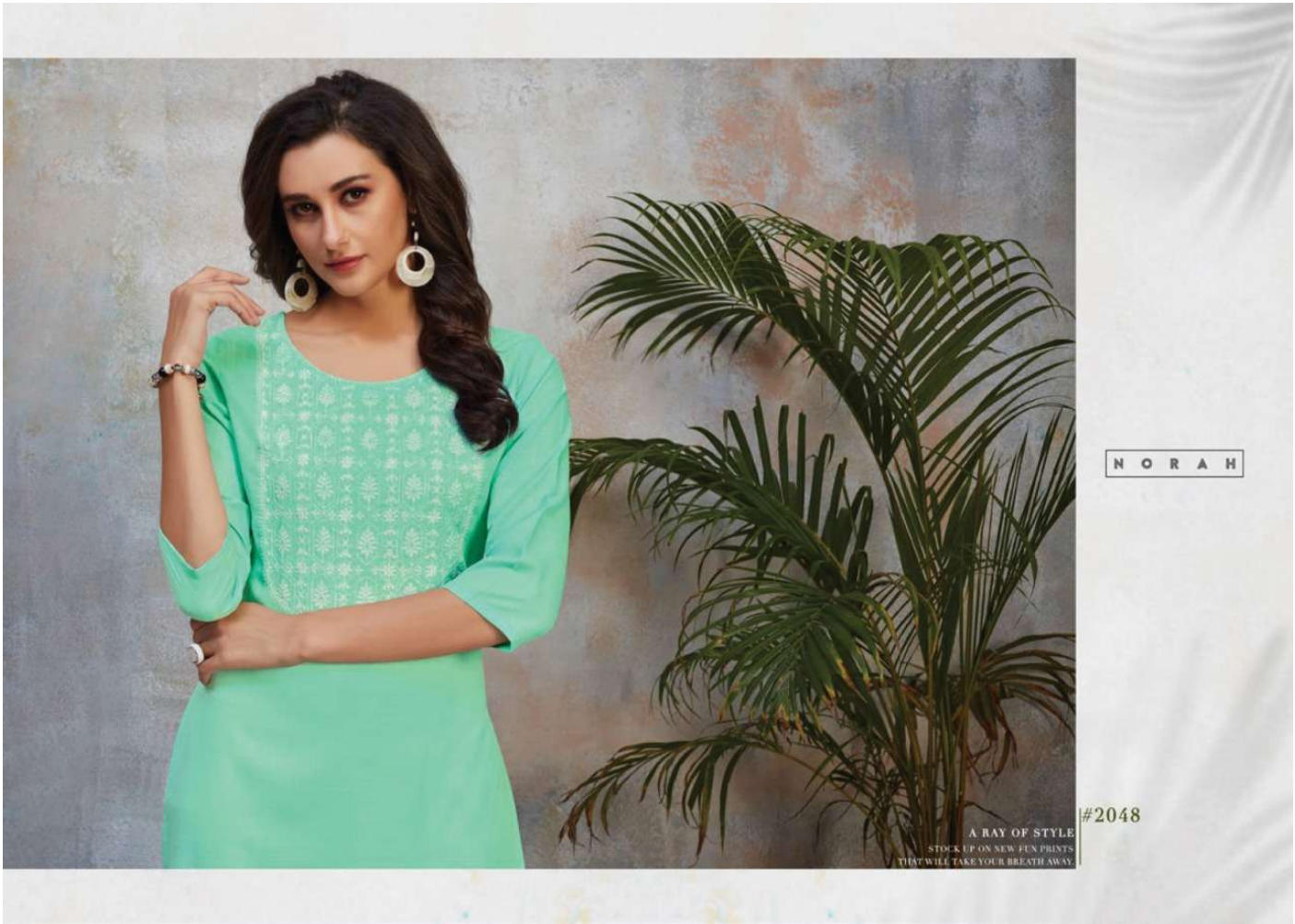
N O R J A



#2048

DISTINGUISHING STYLE
THE KEY IS TO CONTRAST TWO ELEMENTS SO YOU
DON'T END UP OVER DOING THE FEMININE QUOTIENT





N O R A H

#2048

A RAY OF STYLE
STOCK UP ON NEW FUN PRINTS
THAT WILL TAKE YOUR BREATH AWAY

N O R A H



#2049

STYLISH ELEGANCE
SIMPLE WITHOUT LETTING GO OF ELEGANCE &
TRADITION WITH NATURAL FABRICS



N O R A H



THE ESSENCE OF GREAT FASHION
THE COLLECTION SEAMLESSLY CREATES AN AMBIANCE OF STYLE &
GRACE EMBELLISHED IMMACULATLY WITH FINE WORK.

#2050





N O R A H
#2051



FRESH FASHION
SUMMER FASHION TRENDS. LUCKILY THERE ARE FEW
BRIGHT WHITE COLLIERIES - A THAT SUITS EVERYONE.



