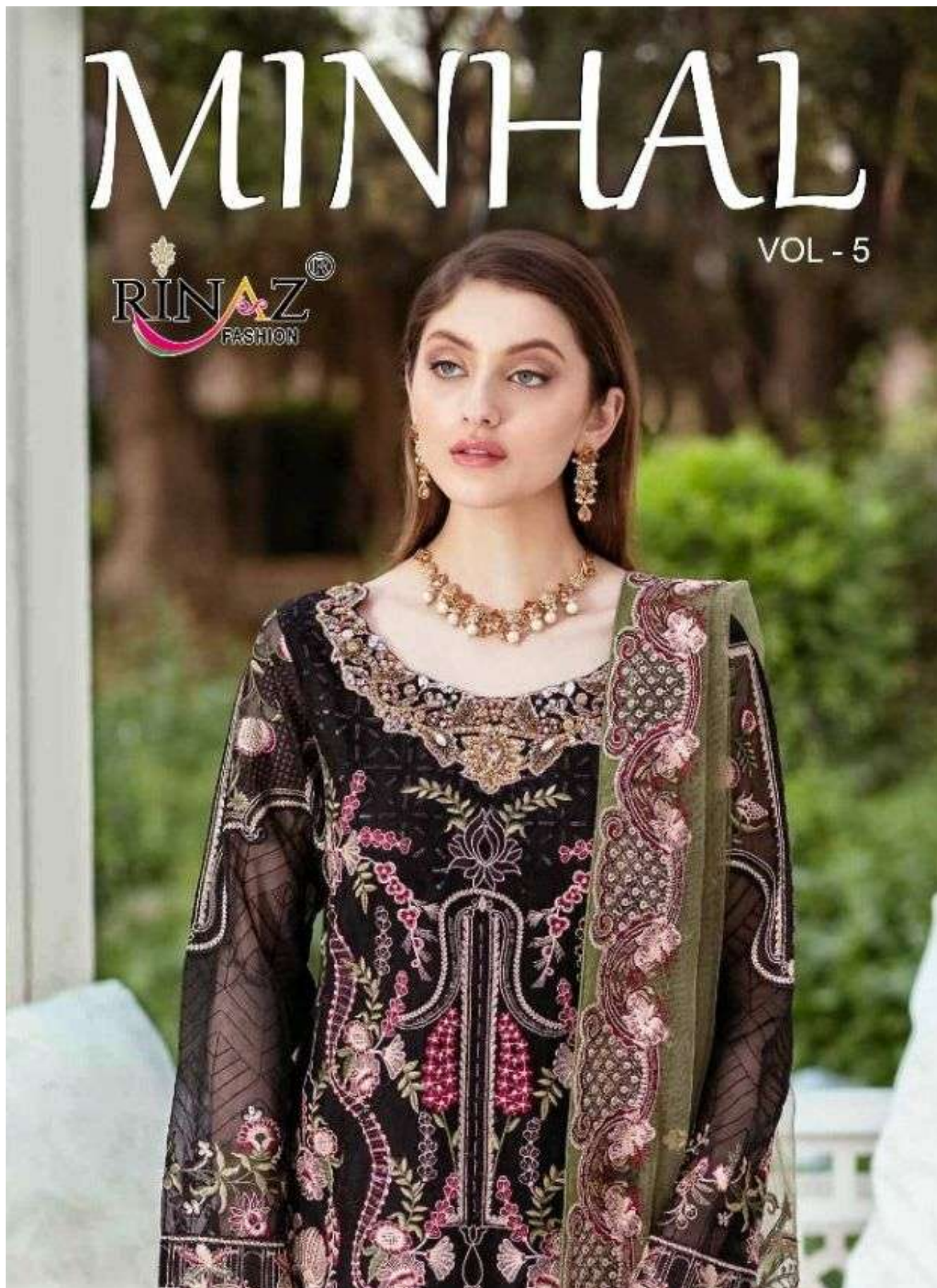


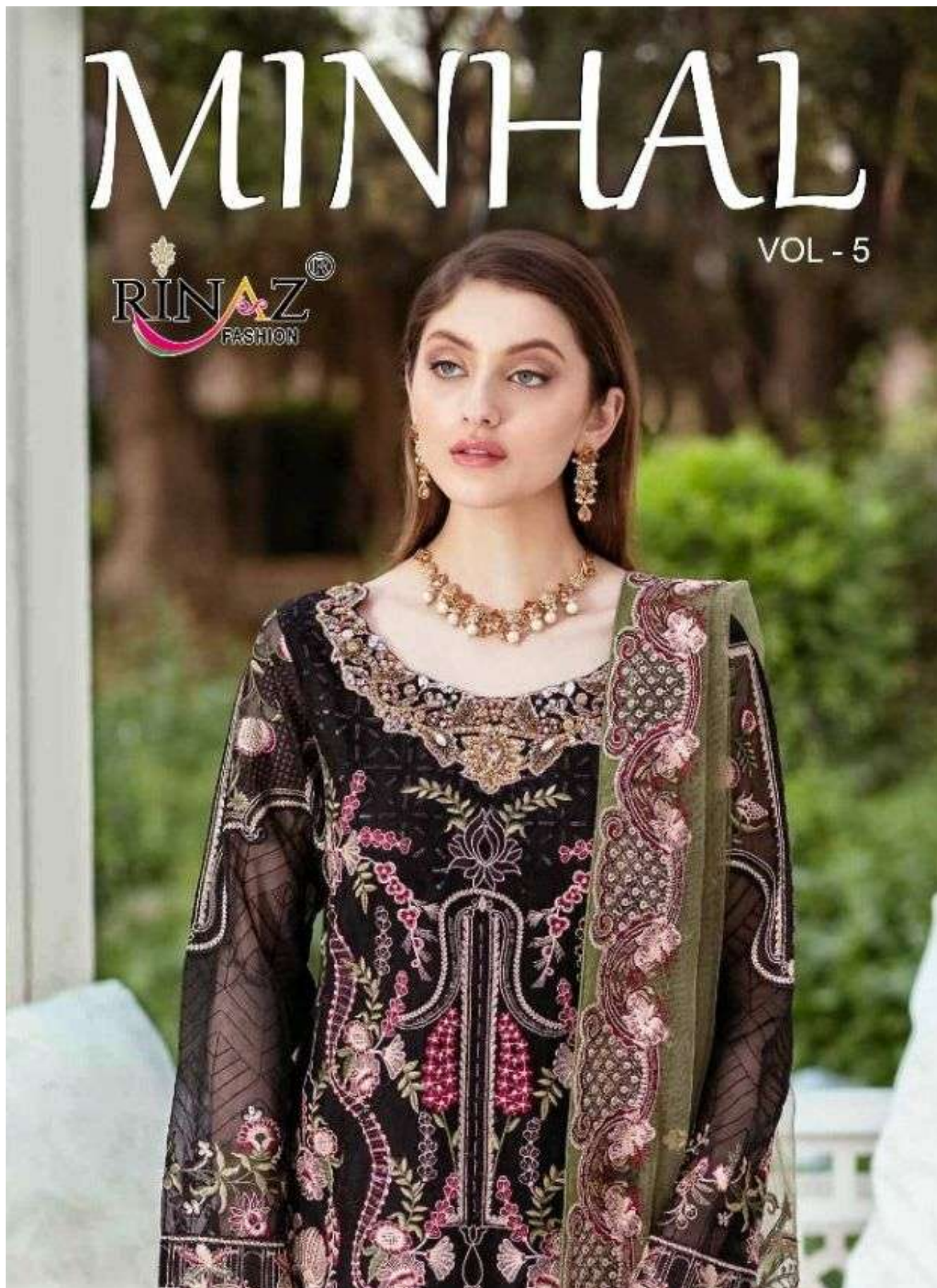
MINHAL

VOL - 5



MINHAL

VOL - 5





WASHING INSTRUCTIONS

DO NOT USE ANY TYPE OF BLEACH OR STAIN REMOVING CHEMICALS
BEFORE CUTTING / STITCHING. FABRIC SHOULD BE SOAKED IN WATER
(ALL COMPONENTS SEPARATELY) FOR 15 MINUTES
DO NOT KEEP WET FABRIC IN TWISTED FORM IN ORDER TO AVOID COPY MARKS !
WASH COLOURED AND WHITE FABRICS SEPARATELY
IRON CLOTHES AT MODERATE TEMPERATURE ! DO NOT DRY FABRIC IN DIRECT SUNLIGHT
(EXTRA LACES , HANGING AND ACCESSORIES ARE NOT INCLUDED)

TOP - FOX GEORGETTE WITH HEAVY
EMBROIDERY & DIAMOND WORK
BOTTOM+INNER - HEAVY SHANTUN
WITH EMBROIDERY
DUPATTA - NAZNIN WITH
HEAVY EMBROIDERY

MINHAL
VOL - 5
D.NO.8902



RINAZ[®]
FASHION

WASHING INSTRUCTIONS

DO NOT USE ANY TYPE OF BLEACH OR STAIN REMOVING CHEMICALS
BEFORE CUTTING / STITCHING. FABRIC SHOULD BE SOAKED IN WATER
(ALL COMPONENTS SEPARATELY) FOR 15 MINUTES
DO NOT KEEP WET FABRIC IN TWISTED FORM IN ORDER TO AVOID COPY MARKS!
WASH COLOURED AND WHITE FABRICS SEPARATELY
IRON CLOTHES AT MODERATE TEMPERATURE! DO NOT DRY FABRIC IN DIRECT SUNLIGHT
(EXTRA LACES, HANGING AND ACCESSORIES ARE NOT INCLUDED)

TOP - FOX GEORGETTE WITH HEAVY
EMBROIDERY & DIAMOND WORK
BOTTOM+INNER - HEAVY SHANTUN
WITH EMBROIDERY
DUPATTA - NAZNIN WITH
HEAVY EMBROIDERY

MINHAL
D.NO.8901

VOL - 5



RINAZ
FASHION

WASHING INSTRUCTIONS

DO NOT USE ANY TYPE OF BLEACH OR STAIN REMOVING CHEMICALS
BEFORE CUTTING / STITCHING. FABRIC SHOULD BE SOAKED IN WATER
(ALL COMPONENTS SEPARATELY) FOR 15 MINUTES
DO NOT KEEP WET FABRIC IN TWISTED FORM IN ORDER TO AVOID COPY MARKS !
WASH COLOURED AND WHITE FABRICS SEPARATELY
IRON CLOTHES AT MODERATE TEMPERATURE ! DO NOT DRY FABRIC IN DIRECT SUNLIGHT
(EXTRA LACES , HANGING AND ACCESSORIES ARE NOT INCLUDED)

TOP - FOX GEORGETTE WITH HEAVY
EMBROIDERY & DIAMOND WORK
BOTTOM+INNER - HEAVY SHANTUN
WITH EMBROIDERY
DUPATTA - NAZNIN WITH
HEAVY EMBROIDERY

MINHAL
D.NO.8905

VOL - 5



WASHING INSTRUCTIONS

DO NOT USE ANY TYPE OF BLEACH OR STAIN REMOVING CHEMICALS
BEFORE CUTTING / STITCHING. FABRIC SHOULD BE SOAKED IN WATER
(ALL COMPONENTS SEPARATELY) FOR 15 MINUTES
DO NOT KEEP WET FABRIC IN TWISTED FORM IN ORDER TO AVOID COPY MARKS !
WASH COLOURED AND WHITE FABRICS SEPARATELY
IRON CLOTHES AT MODERATE TEMPERATURE ! DO NOT DRY FABRIC IN DIRECT SUNLIGHT
(EXTRA LACES , HANGING AND ACCESSORIES ARE NOT INCLUDED)

TOP - FOX GEORGETTE WITH HEAVY
EMBROIDERY & DIAMOND WORK
BOTTOM+INNER - HEAVY SHANTUN
WITH EMBROIDERY
DUPATTA - NAZNIN WITH
HEAVY EMBROIDERY

MINHAL
D.NO.8903

VOL - 5

MINHAL

VOL - 5

RINAZ[®]
FASHION



D.NO.8901



D.NO.8902



D.NO.8903



D.NO.8904



D.NO.8905



WASHING INSTRUCTIONS

DO NOT USE ANY TYPE OF BLEACH OR STAIN REMOVING CHEMICALS
BEFORE CUTTING / STITCHING. FABRIC SHOULD BE SOAKED IN WATER
(ALL COMPONENTS SEPARATELY) FOR 15 MINUTES
DO NOT KEEP WET FABRIC IN TWISTED FORM IN ORDER TO AVOID COPY MARKS !
WASH COLOURED AND WHITE FABRICS SEPARATELY
IRON CLOTHES AT MODERATE TEMPERATURE ! DO NOT DRY FABRIC IN DIRECT SUNLIGHT
(EXTRA LACES , HANGING AND ACCESSORIES ARE NOT INCLUDED)

TOP - FOX GEORGETTE WITH HEAVY
EMBROIDERY & DIAMOND WORK
BOTTOM+INNER - HEAVY SHANTUN
WITH EMBROIDERY
DUPATTA - NAZNIN WITH
HEAVY EMBROIDERY

MINHAL
D.NO.8904

VOL - 5

MINHAL

VOL - 5

D.No.	TOP	BOTTOM	DUPATTA
8901	FOR GEORGETTE WITH HEAVY EMBROIDERY & DIAMOND WORK	HEAVY SHANTUN WITH EMBROIDERY	NAZNIN WITH HEAVY EMBROIDERY
8902	FOR GEORGETTE WITH HEAVY EMBROIDERY & DIAMOND WORK	HEAVY SHANTUN WITH EMBROIDERY	NAZNIN WITH HEAVY EMBROIDERY
8903	FOR GEORGETTE WITH HEAVY EMBROIDERY & DIAMOND WORK	HEAVY SHANTUN WITH EMBROIDERY	NAZNIN WITH HEAVY EMBROIDERY
8904	FOX GEORGETTE WITH HEAVY EMBROIDERY & DIAMOND WORK	HEAVY SHANTUN WITH EMBROIDERY	NAZNIN WITH HEAVY EMBROIDERY
8905	FOX GEORGETTE WITH HEAVY EMBROIDERY & DIAMOND WORK	HEAVY SHANTUN WITH EMBROIDERY	NAZNIN WITH HEAVY EMBROIDERY

***NOTE : Rate 1299 + GST Extra.**