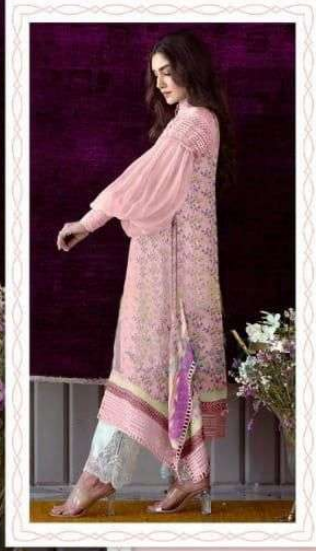




#### CARE INSTRUCTIONS

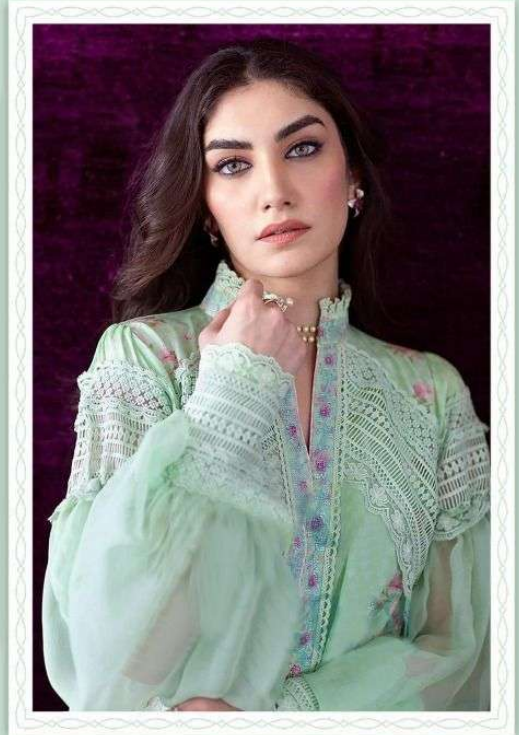
DRY CLEAN RECOMMENDED  
DO NOT USE ANY TYPE OF BLEACH OR  
STAIN REMOVING CHEMICALS  
WASH & SOAK COLORED & WHITE FABRICS SEPARATELY  
DO NOT OVER EXPOSE DAMP FABRIC TO STRONG SUNLIGHT  
IRON AT MODERATE TEMPERATURE



#### CARE INSTRUCTIONS

DRY CLEAN RECOMMENDED  
DO NOT USE ANY TYPE OF BLEACH OR  
STAIN REMOVING CHEMICALS  
WASH & SOAK COLORED & WHITE FABRICS SEPARATELY  
DO NOT OVER EXPOSE DAMP FABRIC TO STRONG SUNLIGHT  
IRON AT MODERATE TEMPERATURE





#### CARE INSTRUCTIONS

DRY CLEAN RECOMMENDED  
DO NOT USE ANY TYPE OF BLEACH OR  
STAIN REMOVING CHEMICALS  
WASH & SOAK COLORED & WHITE FABRICS SEPARATELY  
DO NOT OVER EXPOSE DAMP FABRIC TO STRONG SUNLIGHT  
IRON AT MODERATE TEMPERATURE







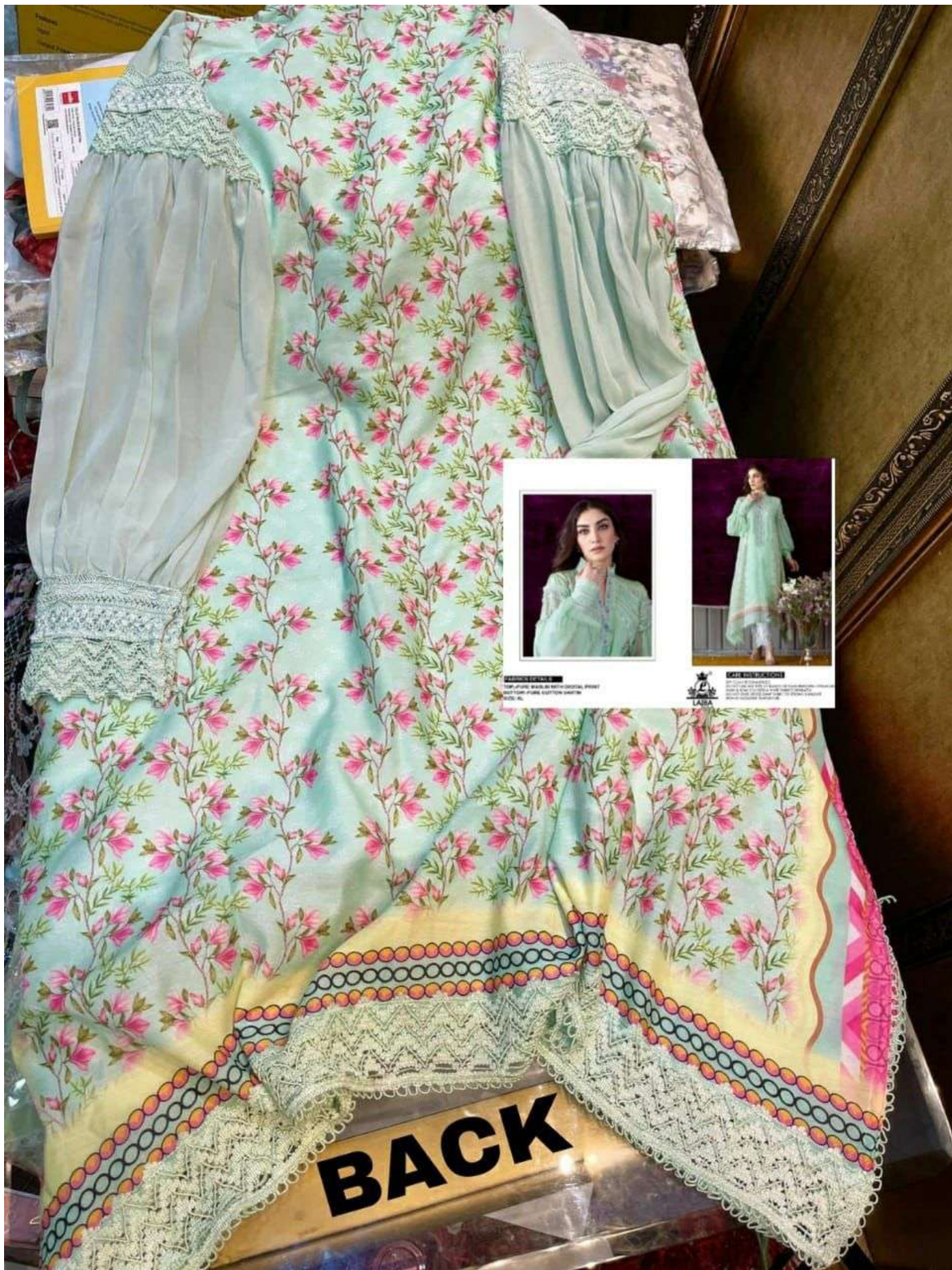


**PAJAMAS TOPPERS**  
TOP-1/2 LINE: BAYLON WITH DIGITAL PRINT  
BOTTOM-PLATE COTTON LUSTRE  
SIZE: 4L



**FOR MORE INFORMATION:**  
 Call 1-800-368-5868 or visit us online at [www.thermofisher.com](http://www.thermofisher.com)  
 or visit our website at [www.thermofisher.com](http://www.thermofisher.com)  
 or visit our website at [www.thermofisher.com](http://www.thermofisher.com)  
 or visit our website at [www.thermofisher.com](http://www.thermofisher.com)





MADE IN PAKISTAN  
100% COTTON  
MADE IN PAKISTAN  
100% COTTON



LAIBA  
100% COTTON  
MADE IN PAKISTAN  
100% COTTON

**BACK**