

# SAADGI

*nakkashi*<sup>®</sup>



# SAADGI

*nakkashi*<sup>®</sup>







A  
born  
classic beauty  
myic passion  
"stylish elegance"

*nakkashi*



5191

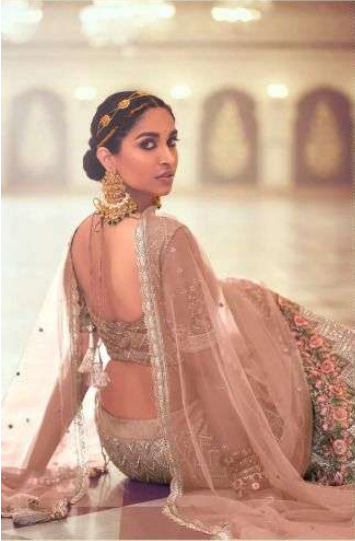






DUSTY PEACH NET LEHenga HAVING MIRROR  
WORK ON IT AND DECORATED WITH JARRAN, HAVING SAME COLOUR  
NET DUPATTA WITH CUTWORK ON IT, PAIRED WITH SAME  
COLOUR EMBROIDERY BLOUSE AND BELT

*nakkashi*



5191





5191





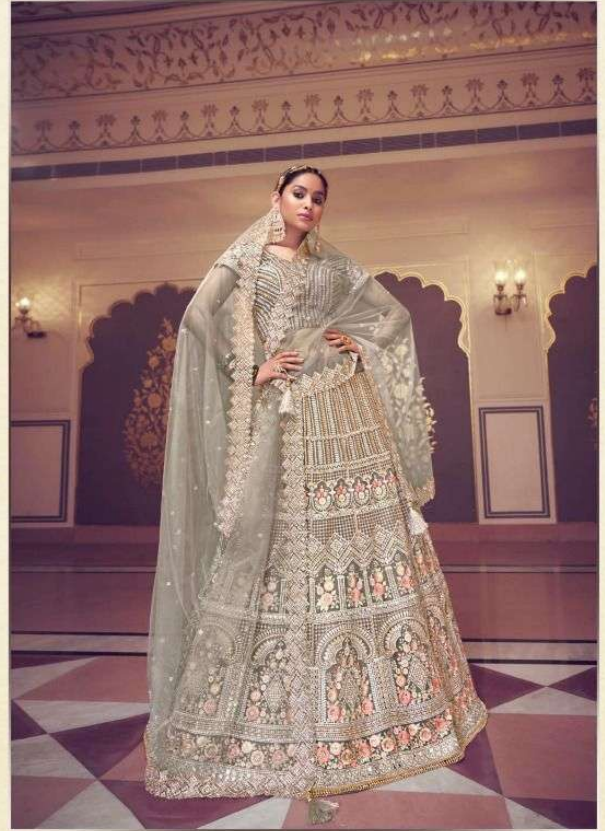
AQUA BLUE NET LEHENGA HAVING MIRROR WORK ON IT AND DECORATED WITH JARIAN, HAVING SAME COLOUR NET DUPATTA WITH ZARI AND JARIAN WORK ON IT, PAIRED WITH SAME COLOUR EMBROIDERY BLOUSE AND BELT





*nakkashi*









GREENISH GREY LEHANGA  
HAVING MIRROR WORK ON IT AND  
DECORATED WITH JAKKAR,  
ANYTHING SAME COLOUR NOT SUPPORTS WITH  
CUTWORK ON IT, BACKED WITH SAME COLOUR  
EMBROIDERY ALONG AND VELVET

*nakkashi*

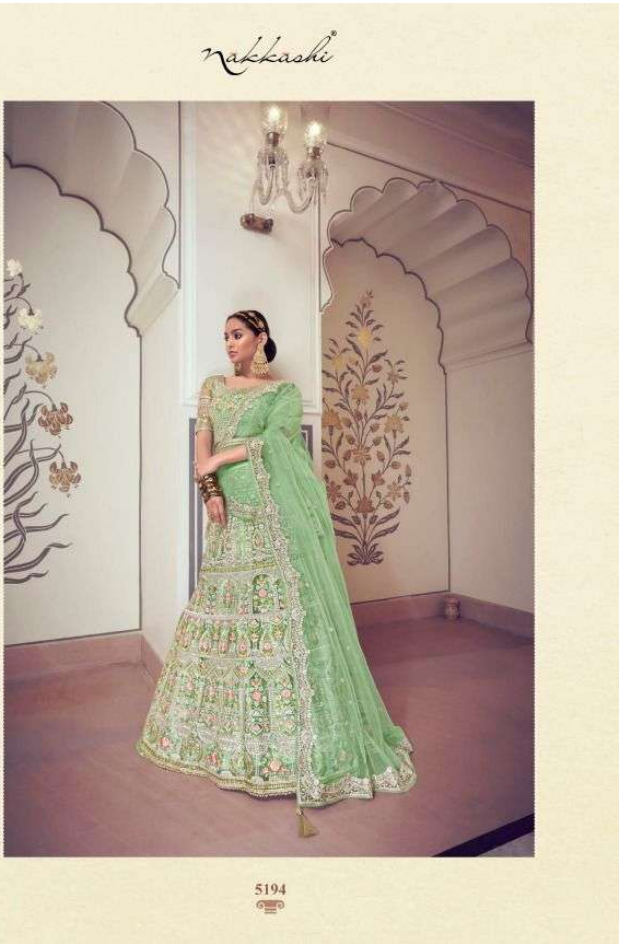


5193



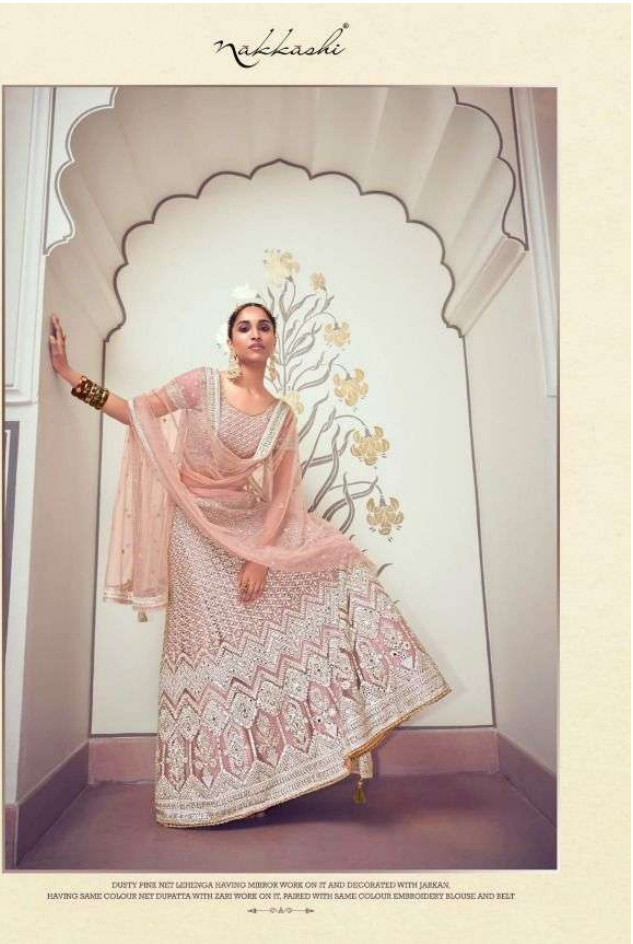




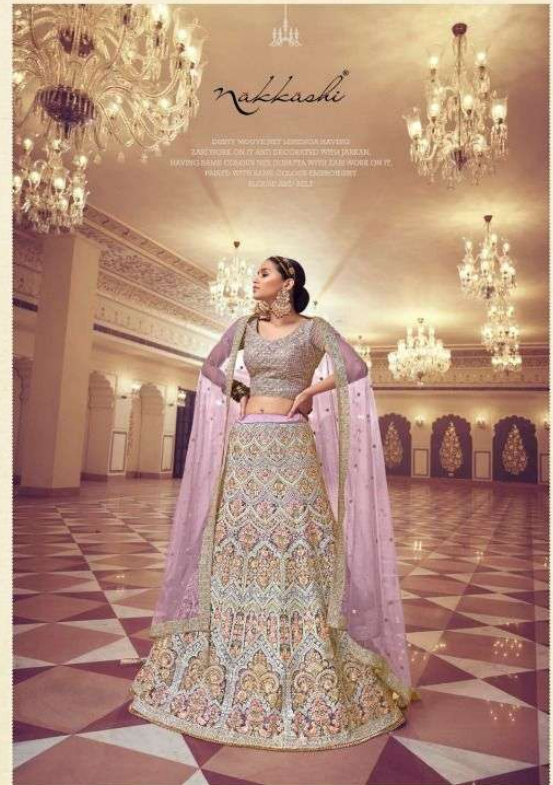
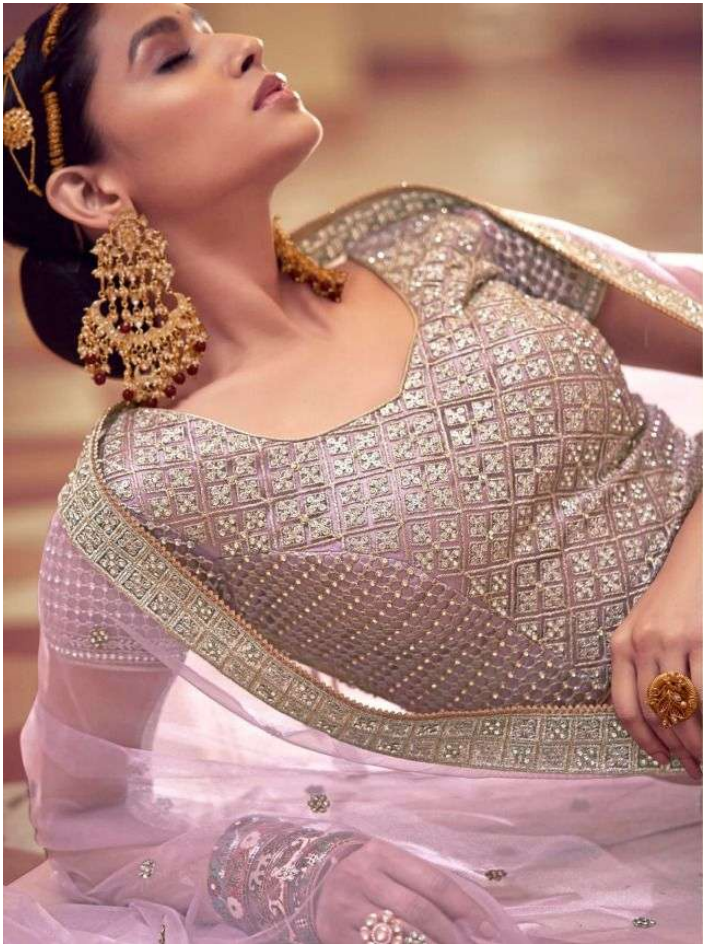








DUSKY PINK NET LEHENGA HAVING MIRROR WORK ON IT AND DECORATED WITH JERKAN.  
 HAVING SAME COLOUR NET DUPATTA WITH ZARI WORK ON IT PAIRED WITH SAME COLOUR EMBROIDERY BLOUSE AND BELT



5196





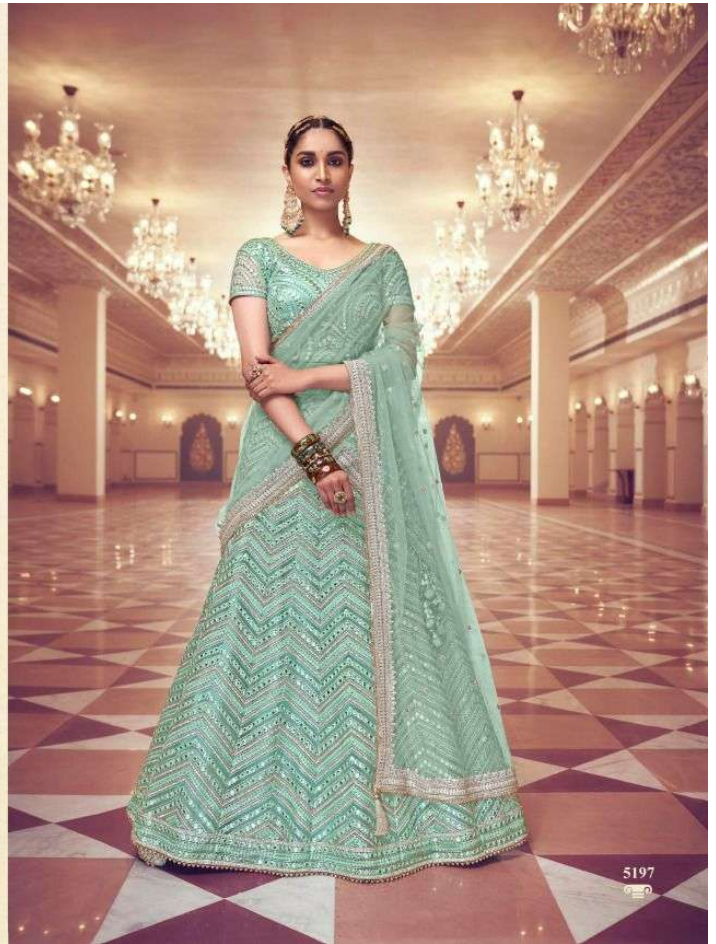
DUSTY MAUVE NET LEHENGA HAVING ZARI WORK ON IT AND DECORATED WITH JAMKAN.  
HAVING SAME COLOUR NET DUPATTA WITH ZARI WORK ON IT. PAIRED  
WITH SAME COLOUR EMBROIDERY BANGLE AND BELT



5196



SEA GREEN NET LEBENGA HAVING GOTA WORK ON IT AND DECORATED WITH JAKKAS,  
HAVING SAME COLOUR NET DURATEA WITH ZARI WORK ON IT, PAIRED WITH SAME COLOUR EMBROIDERY BLOUSE AND BELT



5197





