



शुभकला

*Flory*

Vol-22









*This beautiful collection mingles both contemporary style with an amazing galore of colors and ethnicity for every festival.*

4761





4761



ॐ bhkala



*This beautiful collection mingles both contemporary style with an amazing galore of colors and ethnicity for every festival.*

4762









*This beautiful collection mingles both contemporary style with an amazing galore of colors and ethnicity for every festival.*

4762



ॐ bhkala

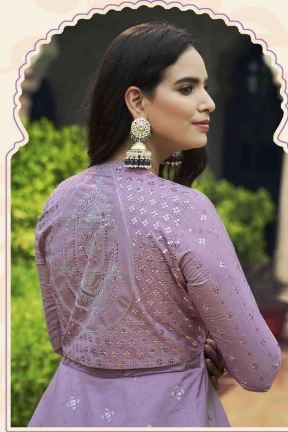
*This beautiful collection mingles both contemporary style with  
an amazing galore of colors and ethnicity for every festival.*

4763





शुभकला



*This beautiful collection mingles both contemporary style with an amazing galore of colors and ethnicity for every festival.*

4763







ॐ bhkala

4765

*This beautiful collection mingles both contemporary style with an amazing galore of colors and ethnicity for every festival.*













Ubhkala



This beautiful collection mingles both contemporary style with an amazing galore of colors and ethnicity for every festival.

4767





Swabhkala



4768



ॐ bhkala

4768

*This beautiful collection mingles both contemporary style with an amazing galore of colors and ethnicity for every festival.*











4761



4762



4763



4764



4765



4766



4767



4768



4769



bhkala



Design NO. (SKU)	Gown & Inner Color	Koti Color	Gown Fabric	Koti Fabric	Inner Fabric	Gown Work	Koti Work	SIZE (SEMI - STITCHED)	Top Length INCH	Inner Length MTR	Koti Length
<b>4761</b>	Mustard Yellow	Multi	Cotton	Cotton	Silk Crepe	Sequince Embroidered Work	Thread With Sequince Embroidered	Semi Stitched (Customized from 34 to 46)	58	3	15 INCH
<b>4762</b>	Dusty Green	Multi	Cotton	Cotton	Silk Crepe	Sequince Embroidered Work	Thread With Sequince Embroidered	Semi Stitched (Customized from 34 to 46)	58	3	15 INCH
<b>4763</b>	Light Purple	Light Purple	Cotton	Cotton	Silk Crepe	Sequince Embroidered Work	Thread With Sequince Embroidered	Semi Stitched (Customized from 34 to 46)	58	3	15 INCH
<b>4764</b>	Chiku	Multi	Cotton	Cotton	Silk Crepe	Sequince Embroidered Work	Thread With Sequince Embroidered	Semi Stitched (Customized from 34 to 46)	58	3	15 INCH
<b>4765</b>	White	Multi	Cotton	Cotton	Silk Crepe	Sequince Embroidered Work	Thread With Sequince Embroidered	Semi Stitched (Customized from 34 to 46)	58	3	15 INCH
<b>4766</b>	Rani	Multi	Cotton	Cotton	Silk Crepe	Sequince Embroidered Work	Thread With Sequince Embroidered	Semi Stitched (Customized from 34 to 46)	58	3	15 INCH
<b>4767</b>	Yellow	Rani	Cotton	Cotton	Silk Crepe	Sequince Embroidered Work	Thread With Sequince Embroidered	Semi Stitched (Customized from 34 to 46)	58	3	15 INCH
<b>4768</b>	Peach	Peach	Cotton	Cotton	Silk Crepe	Sequince Embroidered Work	Thread With Sequince Embroidered	Semi Stitched (Customized from 34 to 46)	58	3	15 INCH
<b>4769</b>	Dusty Orange	Multi	Cotton	Cotton	Silk Crepe	Sequince Embroidered Work	Thread With Sequince Embroidered	Semi Stitched (Customized from 34 to 46)	58	3	15 INCH

DUPATTA NOT AVAILABLE. • CAN-CAN NOT AVAILABLE. • FULL STITCHING AVAILABLE.

KOTI – STITCHED (42-XL SIZE). (ONLY KOTI STITCHED)



THIS BOOK / CATALOGUE / LOGO / ARE PROTECTED UNDER COPYRIGHT ACT.  
AN ILLEGA/UNAUTHORIZED REPRINT, PUBLISHING, REPRODUCTION, DISTRIBUTION AND MODIFICATION OF ANY IMAGES, PHOTOGRAPHS AND  
PRODUCTS, TOTALLY OR IN PART, FOR ANY PURPOSE, REASON OR CAUSE IS STRICTLY PROHIBITED AND PUNISHABLE UNDER LAW.