

*Gulabo*



*Gulabo*



**MRUDANGI**  
THE ART OF ELEGANT CLOTHING

**GORGEOUSLY**  
YOU ARE WHAT YOU WEAR

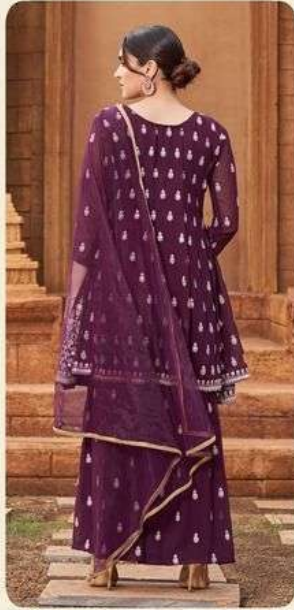
2010











**MRUDANGI**  
GLAMOUR  
WITH ★ YOUR ★ CHOICE  
2013

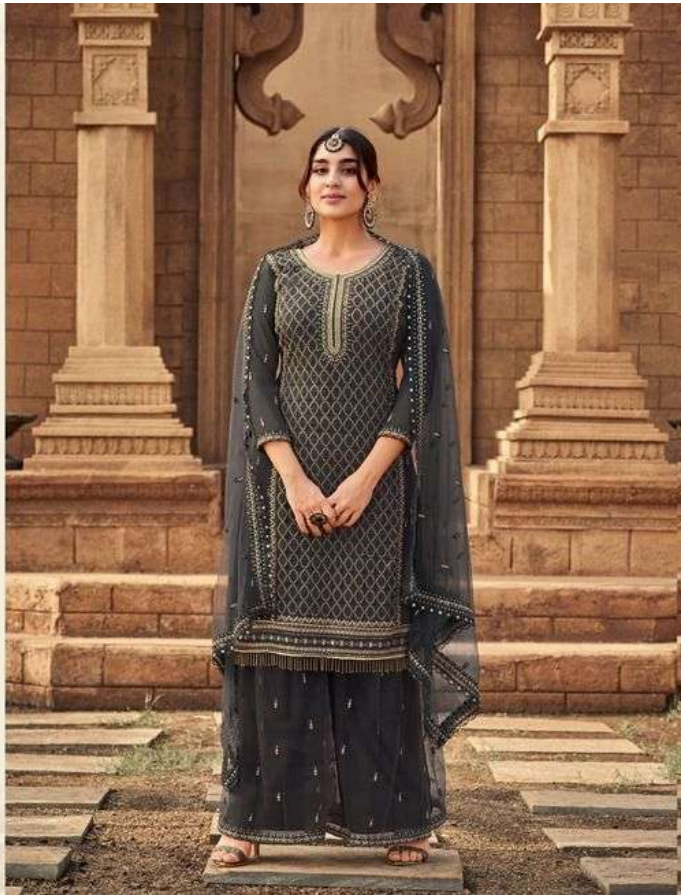




**MRUDANGI**  
THE ART OF ETHNIC CLOTHING

**SENSIBILITY**  
GET ★ FRAGRANCE ★ OF ★ FASHION

2012







2009



2010



2011



2012

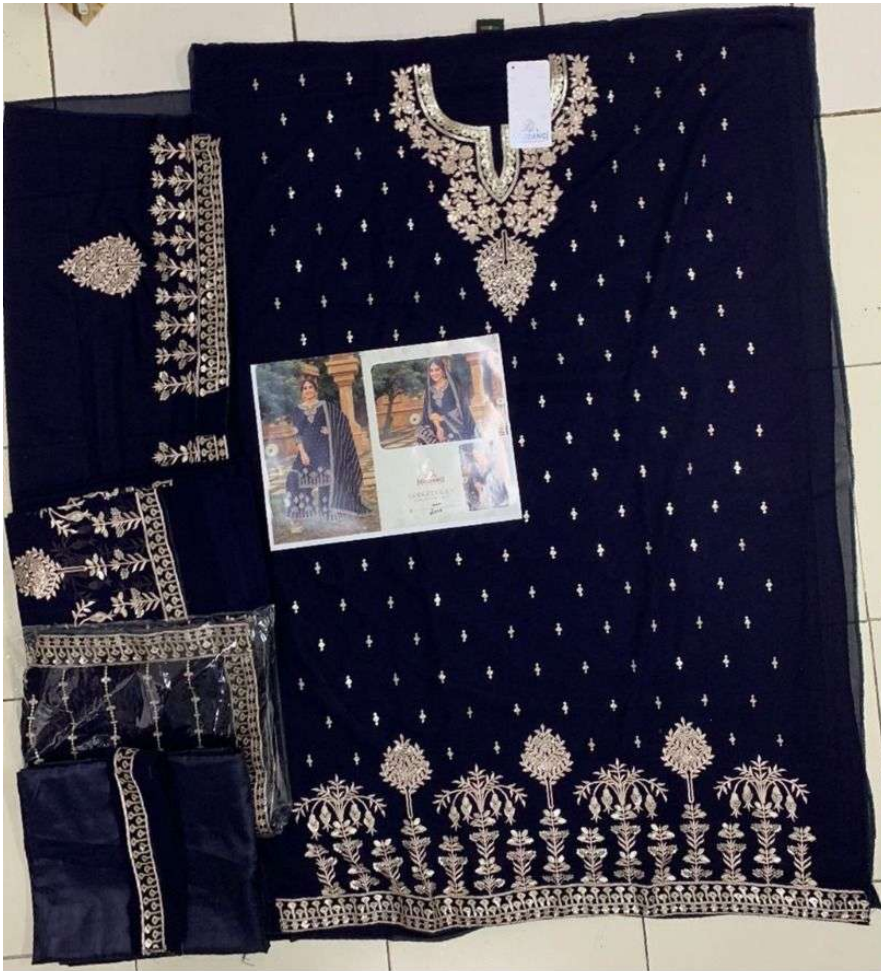


2013



# Gulabo

D.No:	FABRIC DETAIL	RATE
2009	<p>Top Koti - Heavy Georgette With Full Heavy Front Embroidery Work INNER Attach Heavy Santoon</p> <p>Inner - Heavy Santoon</p> <p>Bottom - Heavy Georgette With Full Heavy Embroidery Work</p> <p>Dupatta - Heavy Faux Georgette Net With 4 Side Ready Made Lace</p>	1995/-
2010	<p>Top - Heavy Faux Georgette With Embroidery Work With Squence Work inner attached Santoon</p> <p>Inner - Heavy Santoon Silk Bottoms</p> <p>Bottom - Heavy Faux Georgette With Embroidery Work With Squence Work Bottom Lace Extra</p> <p>Dupatta - Heavy Faux Georgette With Embroidery Work With Squence Work</p>	1995/-
2011	<p>Top - Heavy Faux Georgette with Embroidery Stitch work With Diamonds Stone Work With Santoon Inner Attached</p> <p>Inner - Santoon</p> <p>Bottom - Heavy Faux Georgette with Full Heavy Embroidery Work Santoon</p> <p>Dupatta - Heavy Naznin Dupatta With Swarovski Diamonds Work</p>	1995/-
2012	<p>Top - Heavy Faux Georgette with Embroidery Stitch work With Santoon Inner Attached</p> <p>Bottom - Heavy Butterfly Net with Full Heavy Embroidery Work Santoon attached</p> <p>Dupatta - Heavy Butterfly Net With Embroidery Work &amp; lace Border</p>	1995/-
2013	<p>Top Koti - Heavy Georgette With Full Heavy Front &amp; Back Embroidery Work inner Attach Heavy Santoon</p> <p>Inner - Heavy Santoon</p> <p>Bottom - Heavy Georgette With Full Heavy Embroidery Work</p> <p>Dupatta - Heavy Butterfly Net With 4 Side Ready Made Lace</p>	1995/-



**MRUDANGI-2010**





**MRUDANGI-2011**





**MRUDANGI-2009**







**MRUDANGI-2013**





**MRUDANGI-2012**