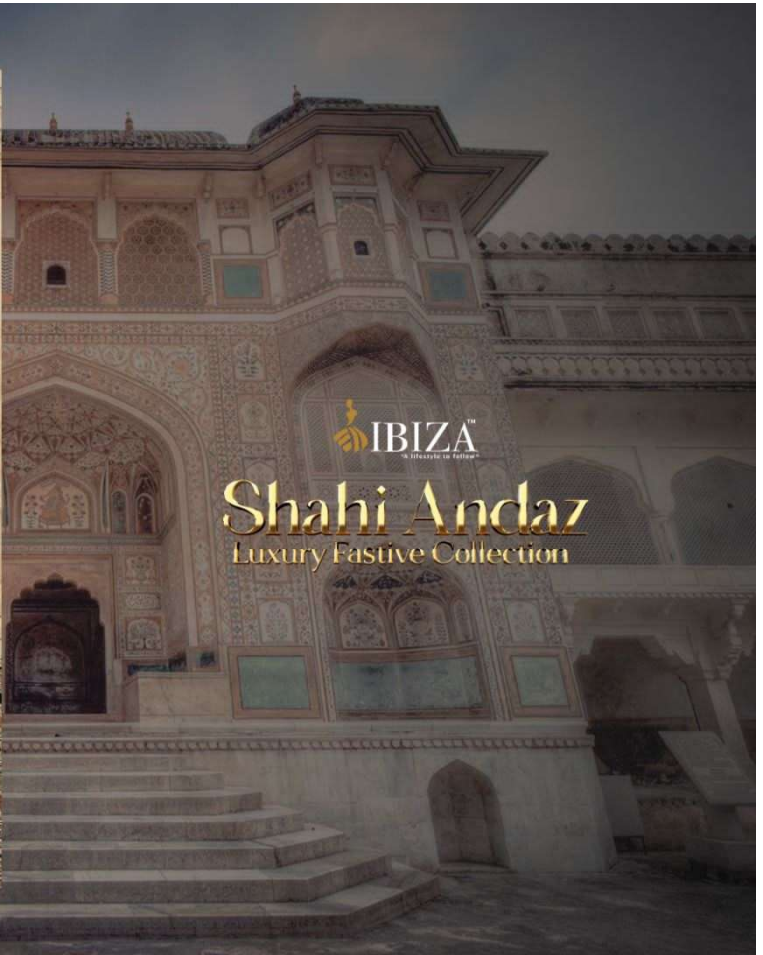




Shahi Andaz

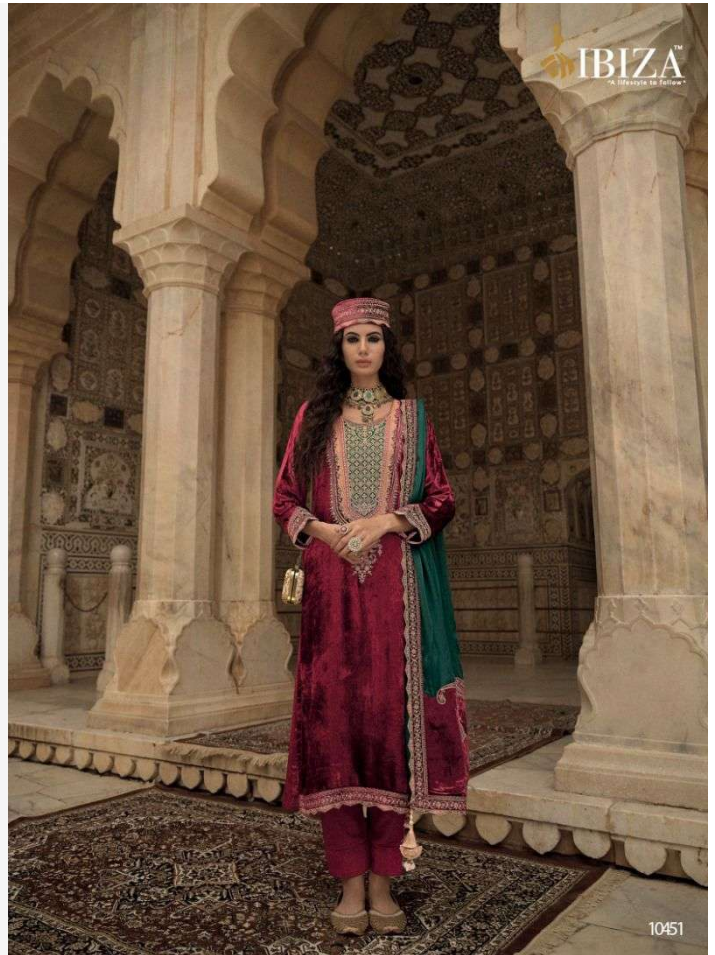
Luxury Festive Collection

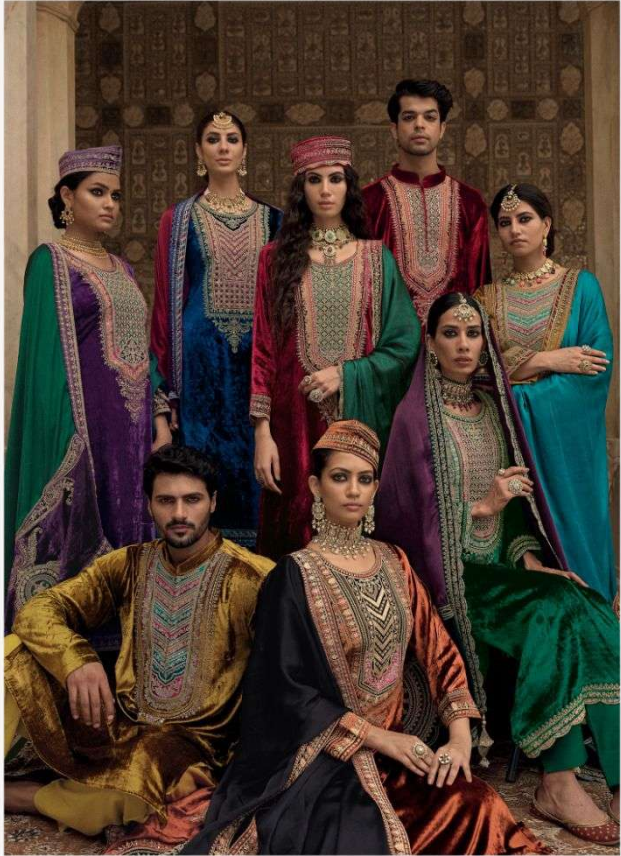


 **IBIZA™**
in lifestyle in fashion

Shahi Andaz

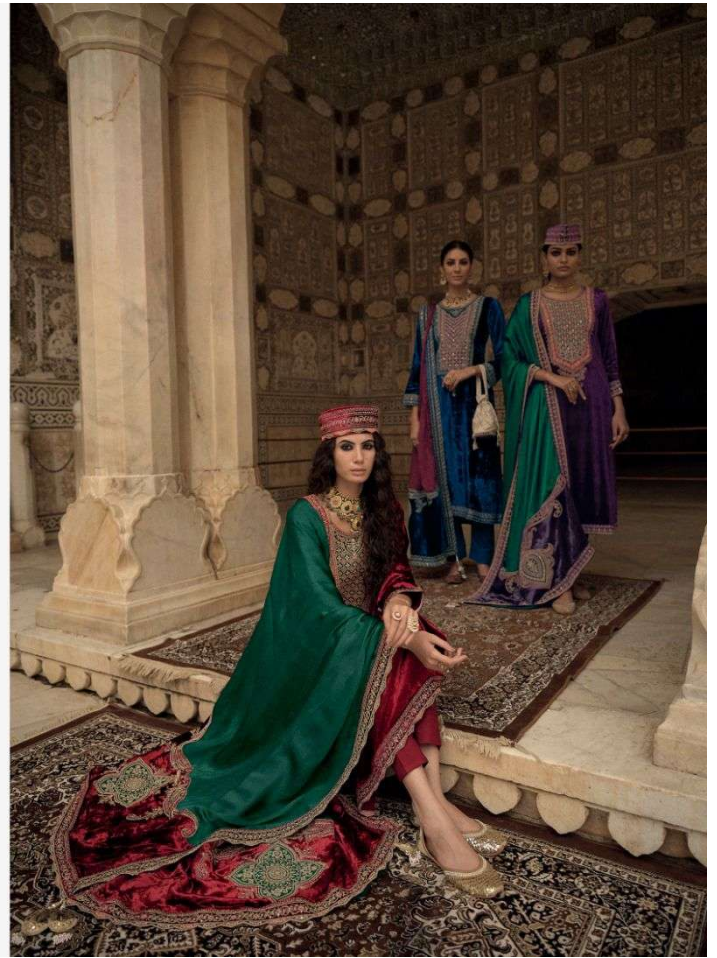
Luxury Festive Collection

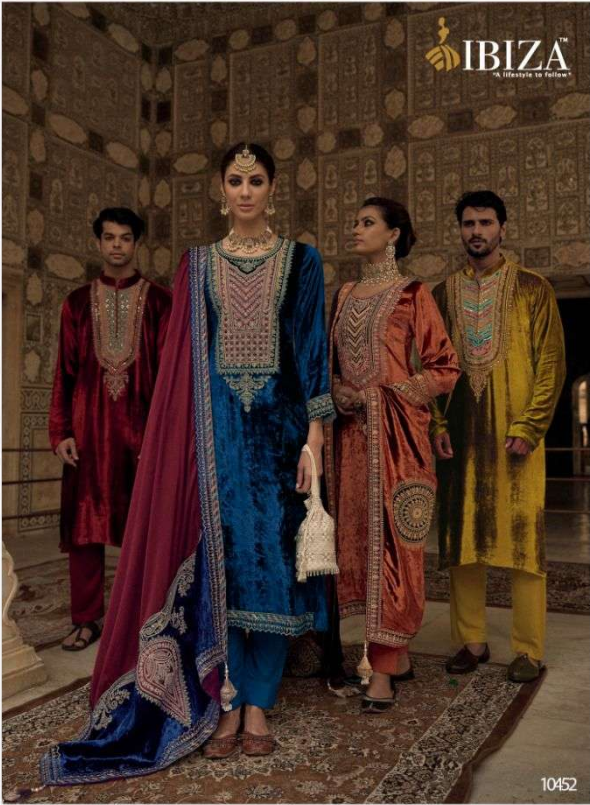






IBIZA™
A Lifestyle to Follow™
Shahi Andaz
Luxury Festive Collection





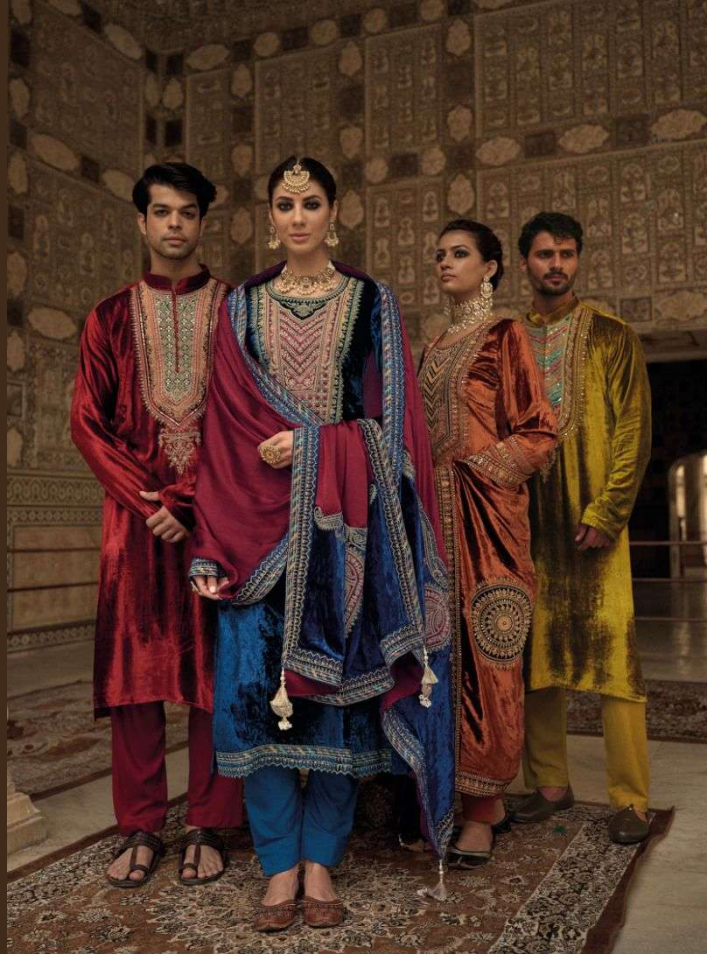


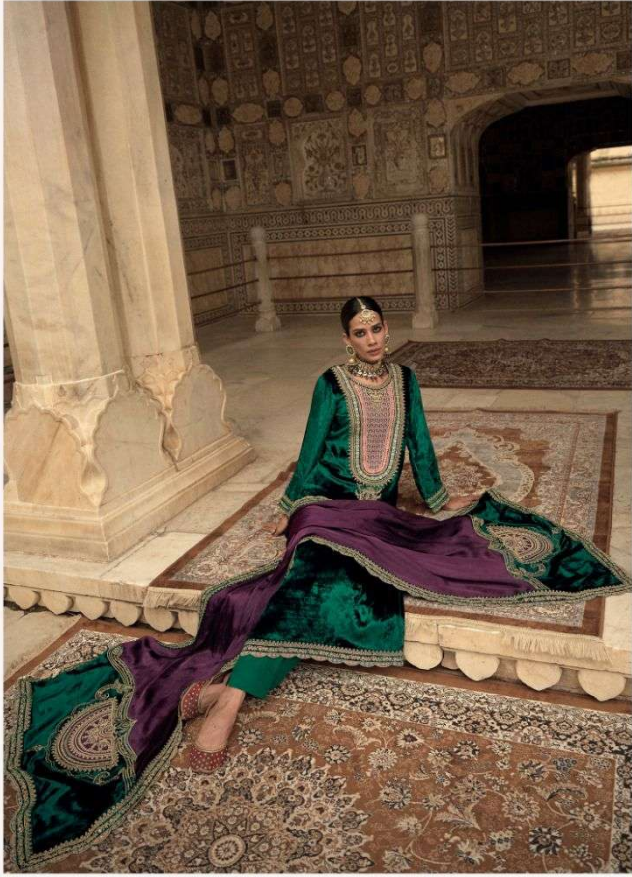
 **IBIZA™**
the lifestyle to follow
Shahi Andaz
Luxury Festive Collection

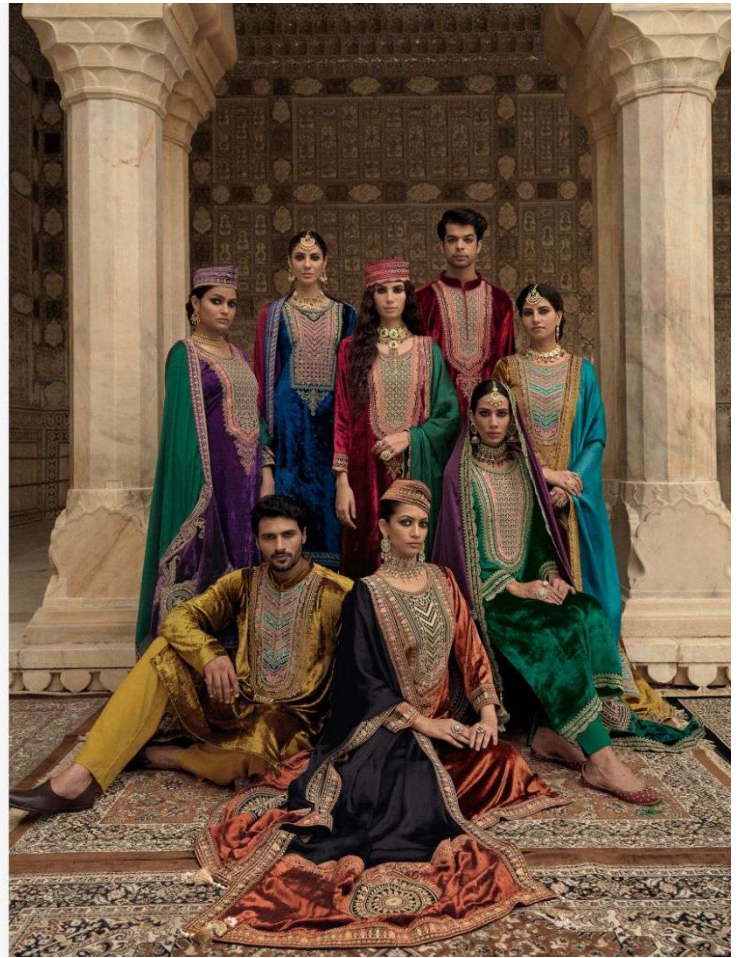


Shahi Andaz

Luxury Festive Collection









 **IBIZA™**
"A Lifestyle to Follow"
Shahi Andaz
Luxury Festive Collection



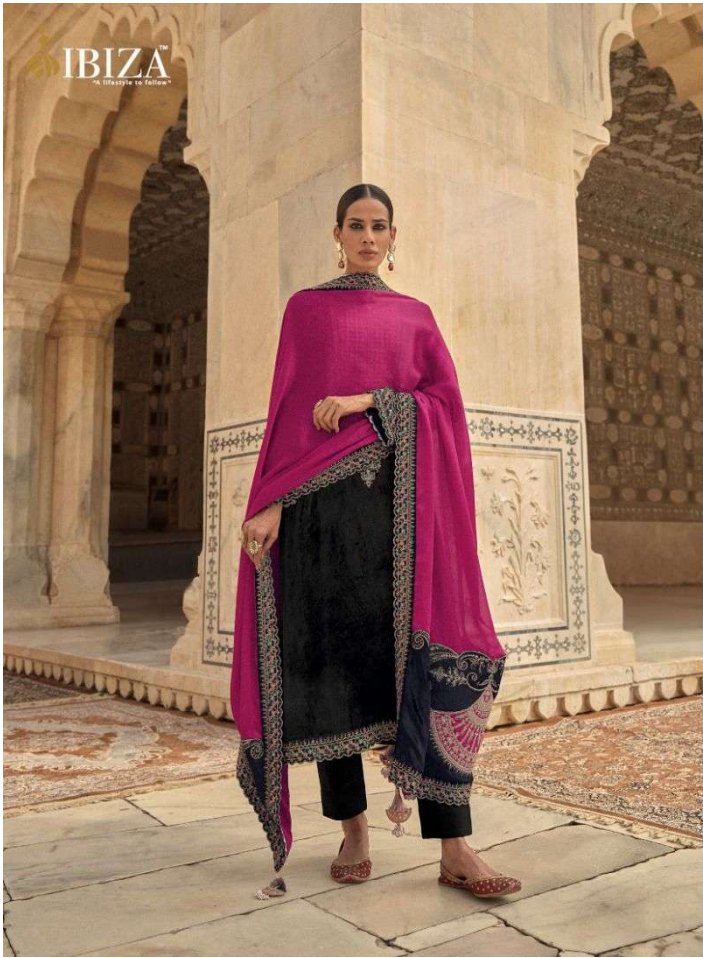




Shahi Andaz

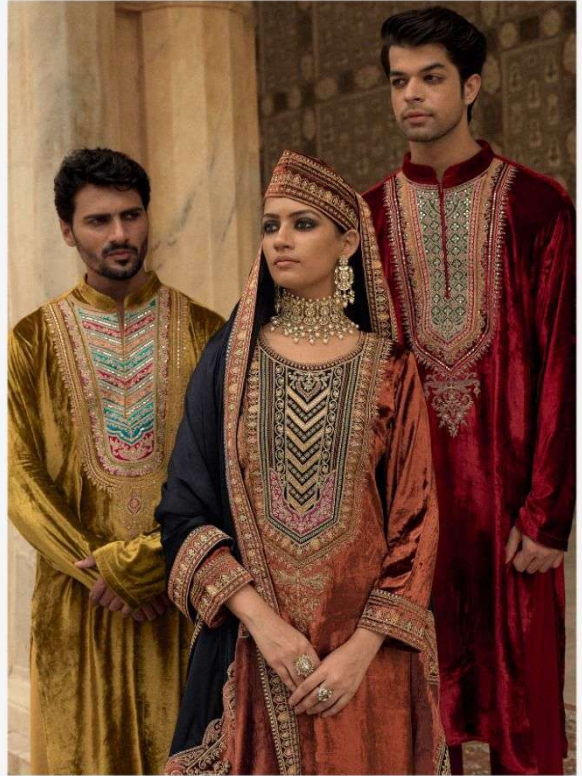
Luxury Festive Collection

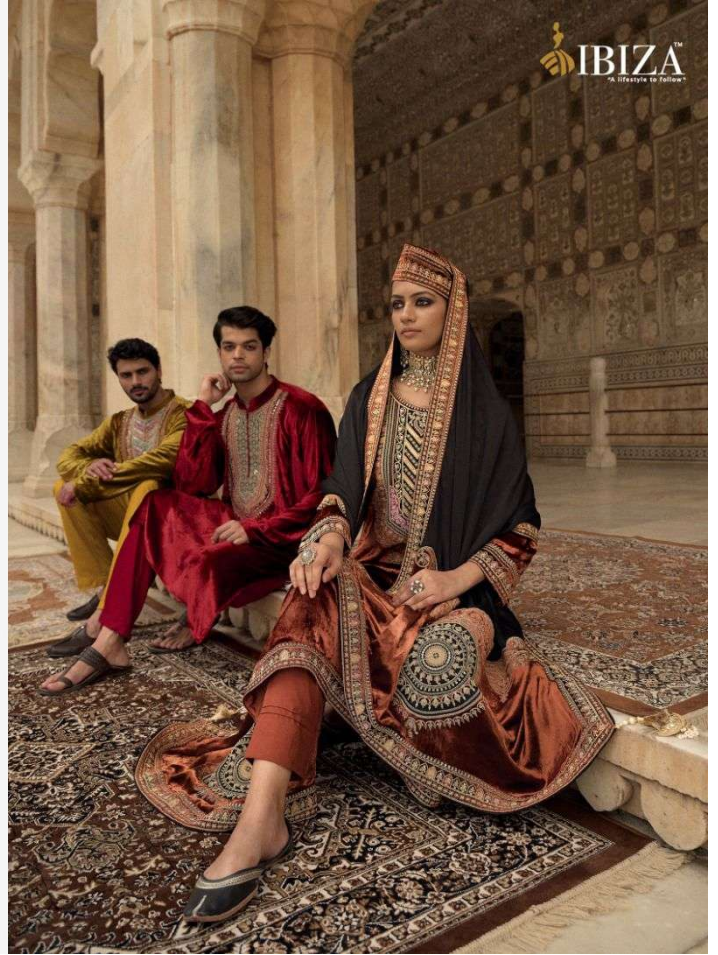
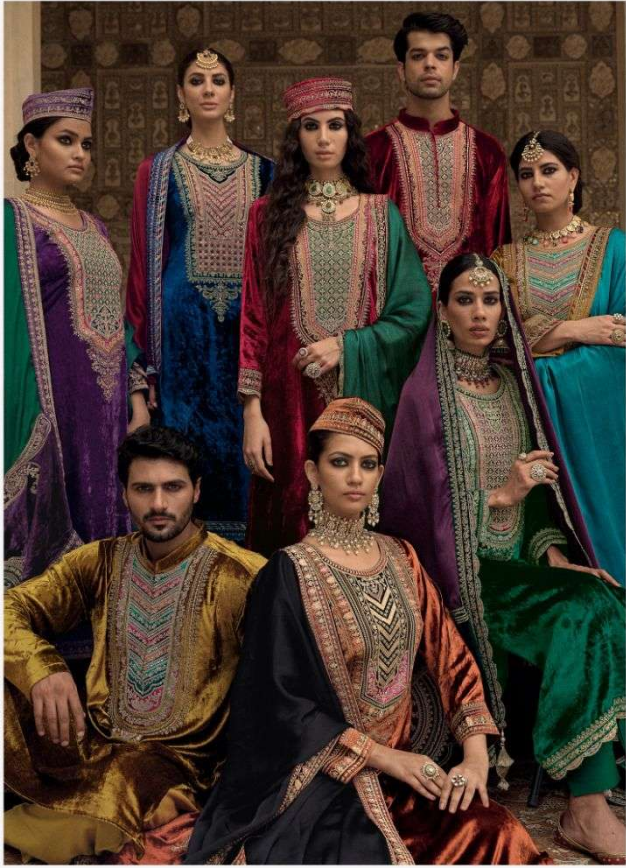


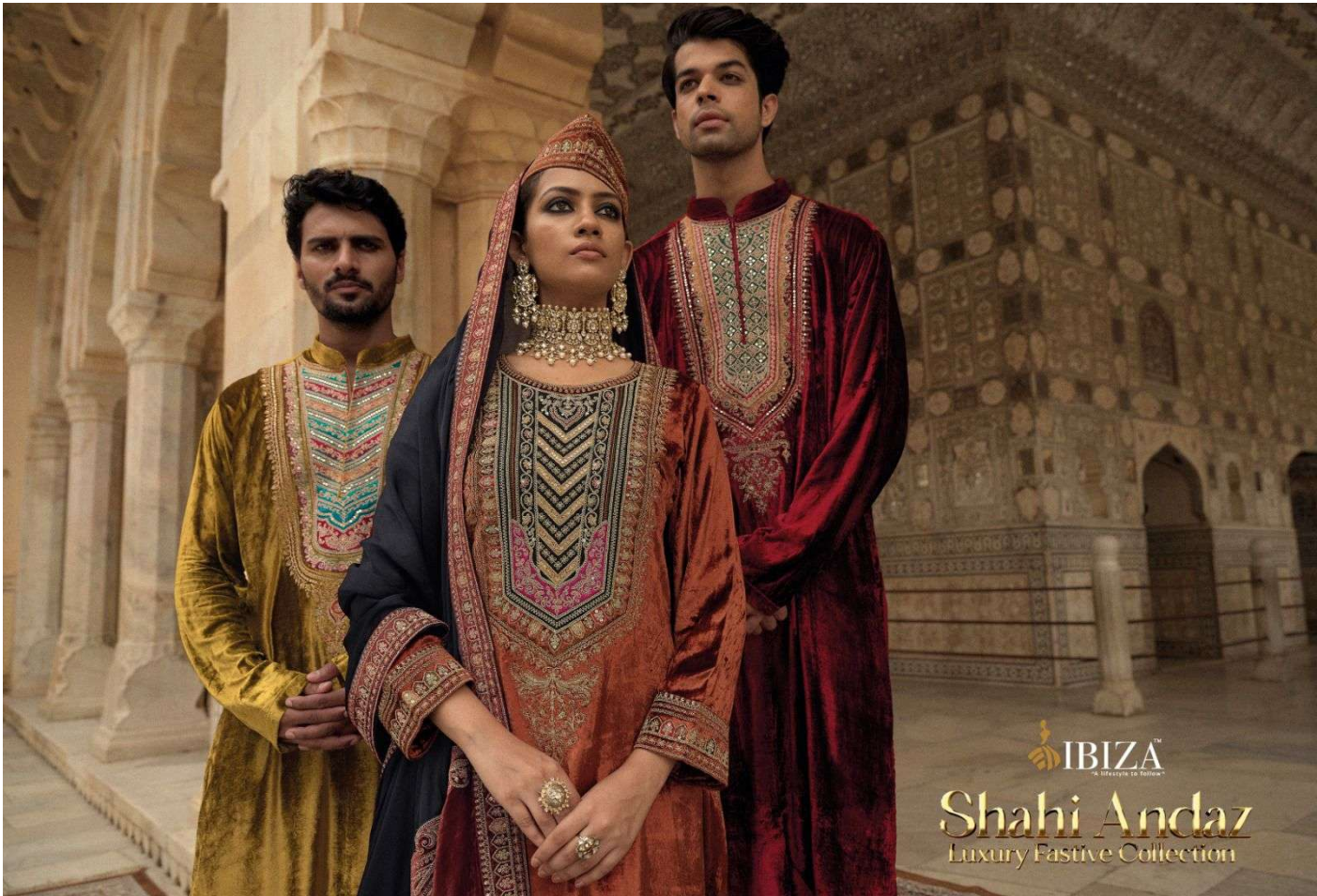


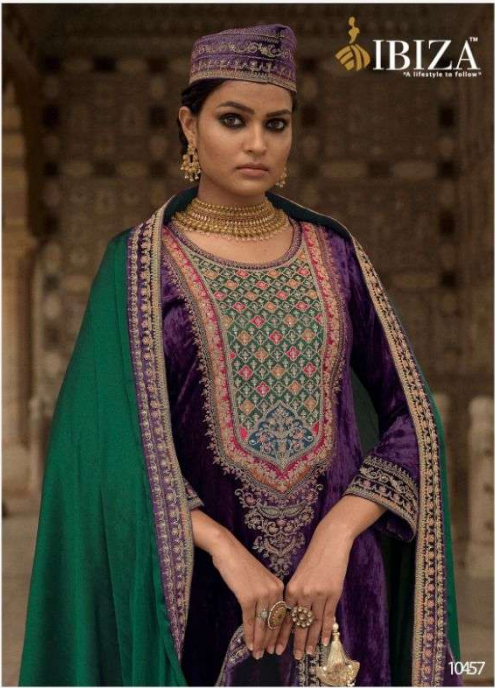


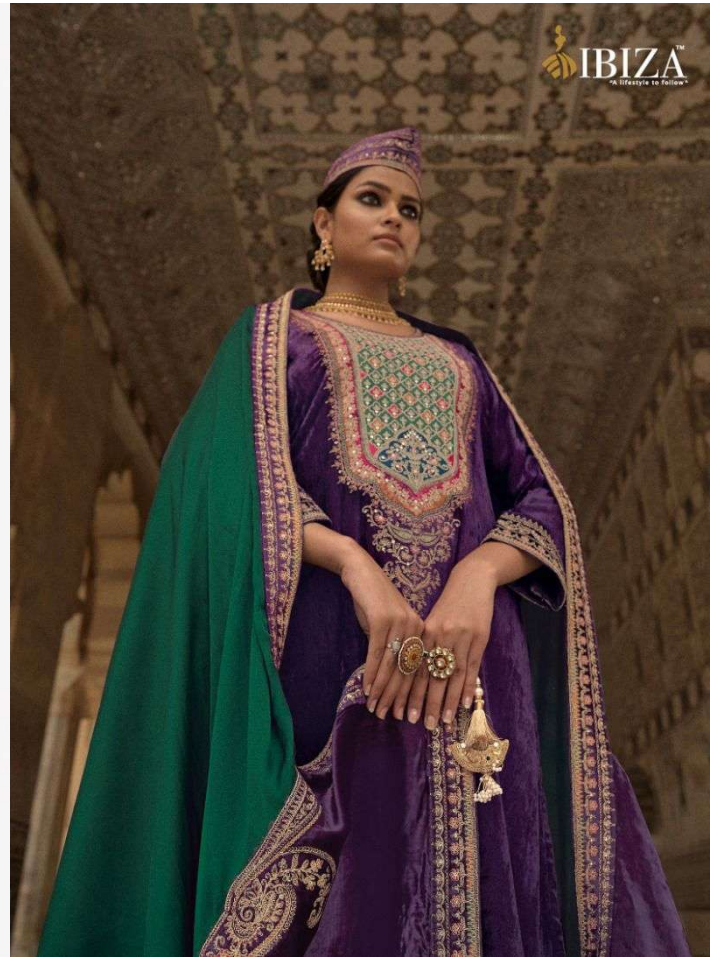
 **IBIZA™**
« lifestyle to follow »
Shahi Andaz
Luxury Festive Collection













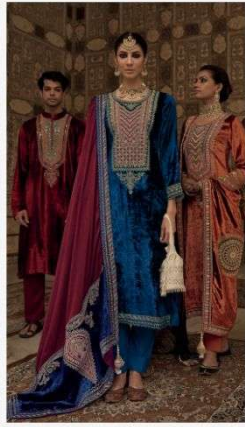




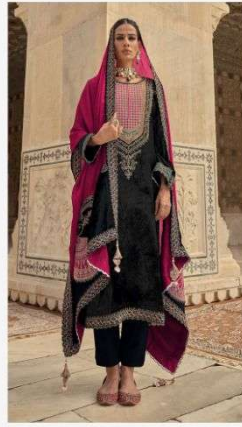




10451



10452



10455



10456



10453



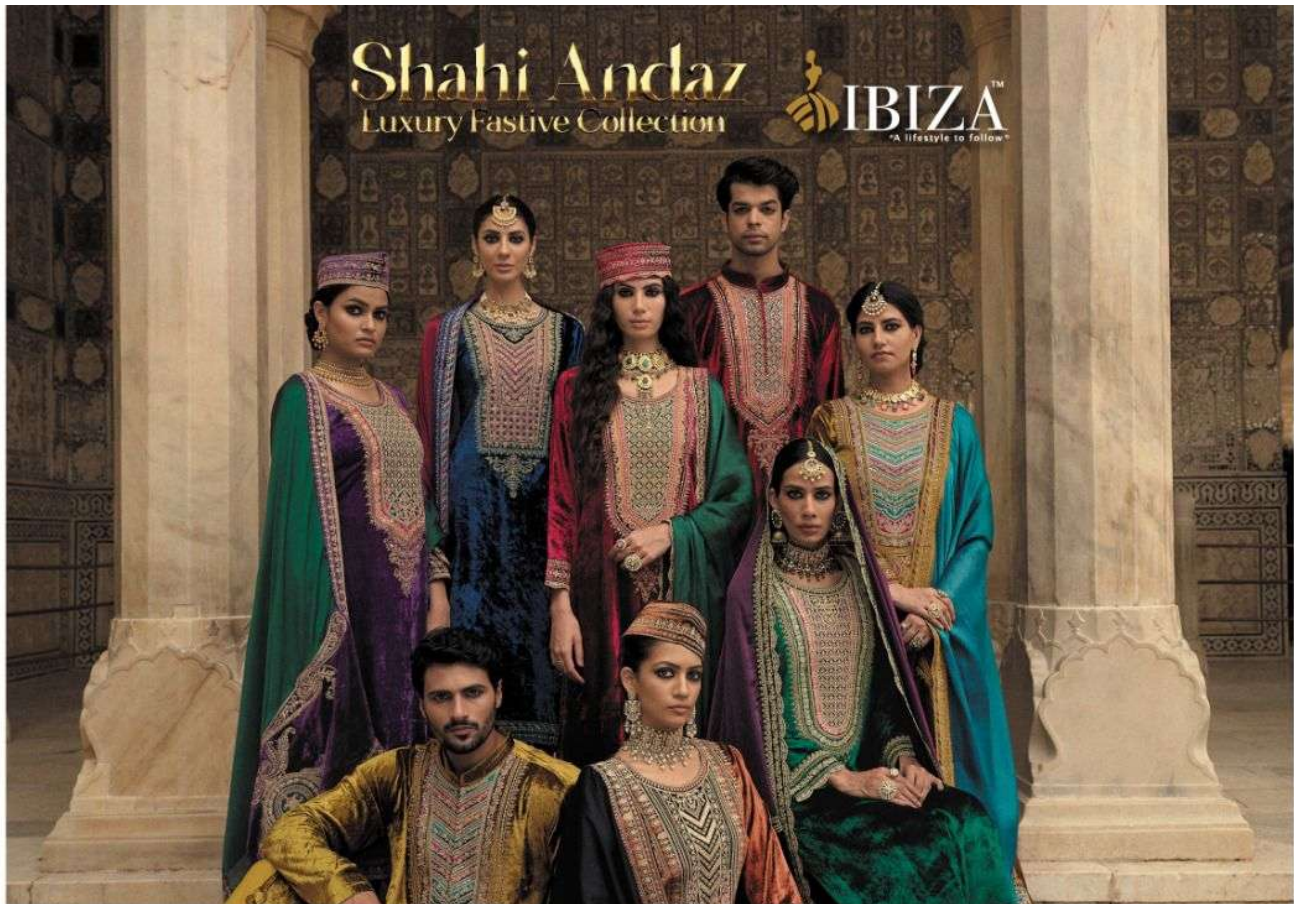
10454



10457



10458



NO	DESCRIPTION	RATE
10451	<p>SHIRT</p> <p>This shirt is crafted from pure Florence viscose velvet, a sumptuous and refined fabric that flows gracefully on the body. The shirt showcases splendid mina work and rich embroidery work that impart elegance and allure to the outfit. The front of the shirt has designer beautiful patch-work that are fashioned from velvet and adorned with rich details</p> <p>DUPATTA</p> <p>This dupatta is of pure Turin organza satin, a breezy and ethereal fabric that harmonizes with the shirt. The dupatta has velvet lace on all four sides that are embroidered with delicate patterns. The two ends of the pallu have designer velvet patches that coordinate with the shirt</p> <p>TROUSERS</p> <p>Stylish trousers made from pure Rimini viscose pashmina, a smooth and warm fabric. The trousers have versatile colors. The fabric is warm and comfortable</p>	3595/-
10452		3595/-
10453		3595/-
10454		3595/-
10455		3595/-
10456		3595/-
10457		3595/-
10458		3595/-
DESIGNNR-8		RATE:-28760