



MOHMANTHAN™

Royal



MAHOTSAV®
GROUP



Enigma



MOHMANTHAN™

Royal



MAHOTSAV®
GROUP



Enigma

A CASCADE OF LIGHT
BROWNS WITH EARTHY HUES

Radiant as a summer sunrise, this elegant saree intertwines chocolate-light brown shades with baked earthy harmonious fusion of nature-inspired style.



Fabric: Silk Crepe Georgette
Accessories: Belt, Rody Blouse

23301

VIBRANT BLUE CHARM

Experience tranquility with the Vibrant Blue Sarve, where cool blue tones evoke serene emotions.



100
FUSION SAREE

Fabric: Satin Silk Crape
Accessories: Belt, Redy Blouse, Jacket

23302

VIVID SPECTRUM GLAMOUR



Wrap your grace in this Spectrum-Inspired Saree, a canvas of multiple hues that mirror a woman's vibrant beauty.



Fabric: Silk Crepe Georgette
Accessories: Belt, Rody Blouse
23303

*Amidst this palette of calm blue, her beauty emanates an electrifying allure,
creating a mesmerizing blend of serene poise and exhilarating charm.*



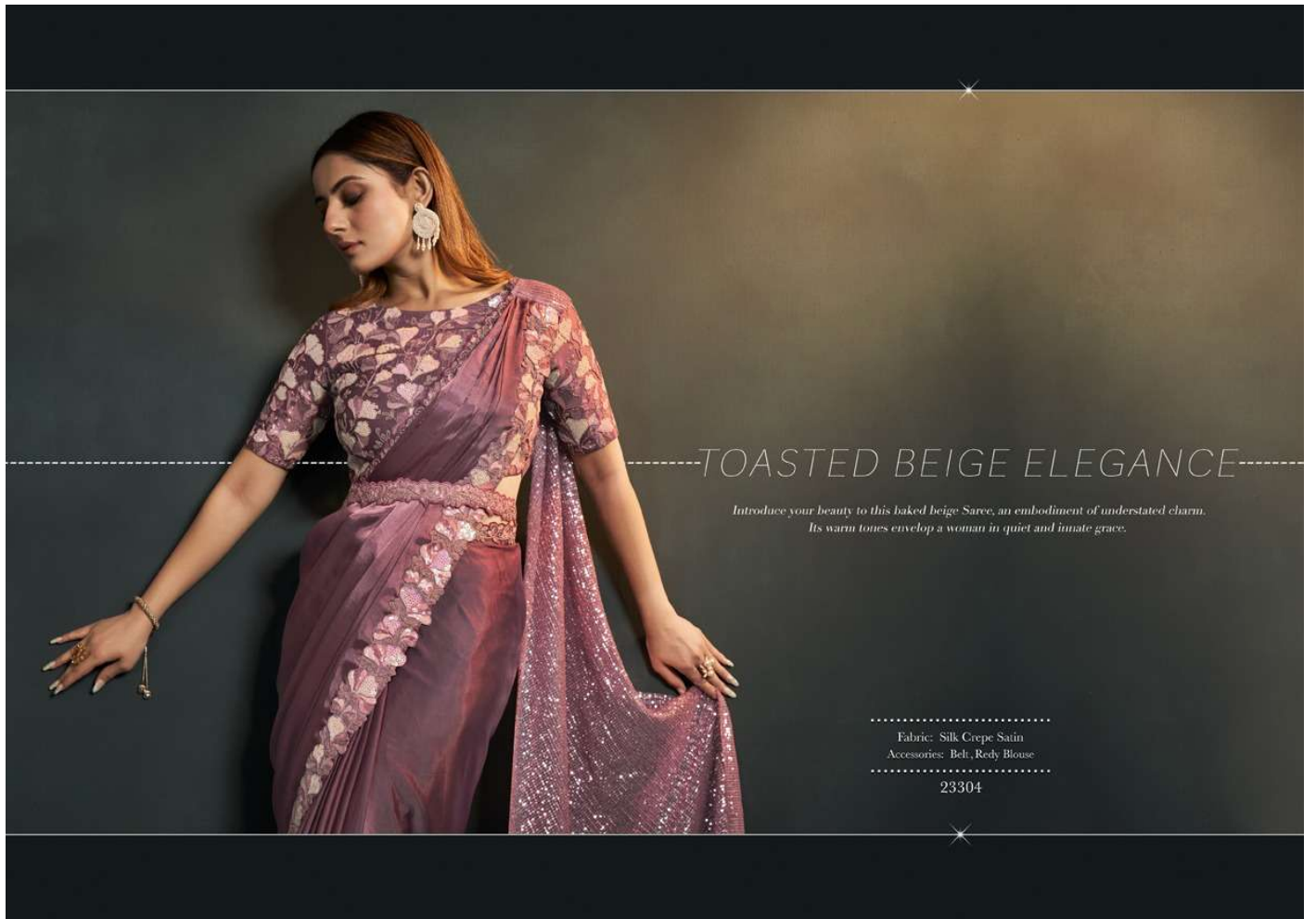
.....
Fabric: Satin Silk Crape
Accessories: Belt, Reddy Blouse, Jacket
.....
23302



*Adorned in beige, she exudes an enchanting thriving life's subtle tones.
This attire pays homage to enduring beauty that thrives in understatement.*



.....
Fabric: Silk Crepe Satin
Accessories: Belt, Rody Blouse
.....
23304



-----TOASTED BEIGE ELEGANCE-----

*Introduce your beauty to this baked beige Saree, an embodiment of understated charm.
Its warm tones envelop a woman in quiet and innate grace.*

.....
Fabric: Silk Crepe Satin
Accessories: Belt, Redy Blouse
.....

23304

-----CHARISMATIC STERLING GREY-----

*With each fold, you capture a different shade, symbolizing a testament to her elegance,
where colours blend in harmony.*



.....
Fabric: Silk Grape Satin
Accessories: Belt, Reddy Blouse
.....
23305



A flawless gentle light colour that embodies understated sophistication. This saree celebrates the allure that exudes subdued strength, presenting an unfolding vision woven in fabric.



.....
 Fabric: Silk Crepe Georgette
 Accessories: Belt, Reddy Blouse, Jacket

 23306



EBONY-PURPLE FUSION

Affectionately, this Mauve Noir Saree, where the fusion of purple and black embodies enigmatic elegance, captures the essence of a woman's multi-faceted charm.

Fabric: Silk Crepe Satin
Accessories: Belt, Rody Blouse

23307

TENDER PINK SERENITY

A perfect tender pink is a reflection of unassuming elegance. This attire honours the beauty that radiates silent power, showcasing a blossoming draped dream.



Fabric: Silk Crêpe Georgette
Accessories: Belt, Reddy Blouse, Jacket

23306



-----RUSTIC BLUSH APPEAL-----

*With a blend of peach pink and mud-baked hues that embodies natural charm,
this attire mirrors a woman's timeless beauty.*

.....
Fabric: Silk Crepe Satin
Accessories: Belt, Reddy Blouse
.....

23308

With a touch of mesmerizing darkness, the drapes tell a story of mystery and
sophistication, with sensuality of Silk Crepe Satin in Ebony.



Fabric: Silk Crepe Satin
Accessories: Bell, Reddy Blouse
23307

GLISTENING MOONLIGHT ELEGANCE-----

With the ethereal charm of moonlit nights, this attire encapsulates a woman's magnetic elegance through shades that echo the moon's soft glow.

Multi-Purpose Saree



Fabric: Pattern Jari Georgette
Accessories: Belt, Reddy Blouse, Jacket

23309



Capture the desires with the fusion of pink and baked mud shades that reflects a woman's ageless grace, echoing the earthy elegance inherent in neutral tones.



Fabric: Silk Crepe Satin
Accessories: Belt, Reddy Blouse

23308

★ ---DEEP MAROON BURGUNDY ECHOES--- ★

*Get a weaving tapestry, which embraces a woman's essence with
the richness of maroon, reflecting her strength and grace.*

.....
Fabric: Silk Crepe Satin
Accessories: Belt, Remy Blouse
.....

23310



A silver tone capture the mystique of moonlit serenity, portraying a charm that weaves an enchanting narrative, where each drape tells a story of serene confidence.



Fabric: Pattern Jani Georgette
Accessories: Belt, Reddy Blouse, Jacket
23309

RADIANT YELLOW GLAMOUR

A Radiating yellow with deep illuminate hues of elegance, this saree envelops a woman in golden warmth, reflecting her inner glow.



Fabric: Organza Silk Crepe
Accessories: Belt, Rody Blouse

23311

Step into elegance with the Burgundy Maroon Saree, where shades of maroon make you a woman with an aura of poise and allure with capturing spirit.



Fabric: Silk Crepe Satin
Accessories: Belt, Reddy Blouse

23310