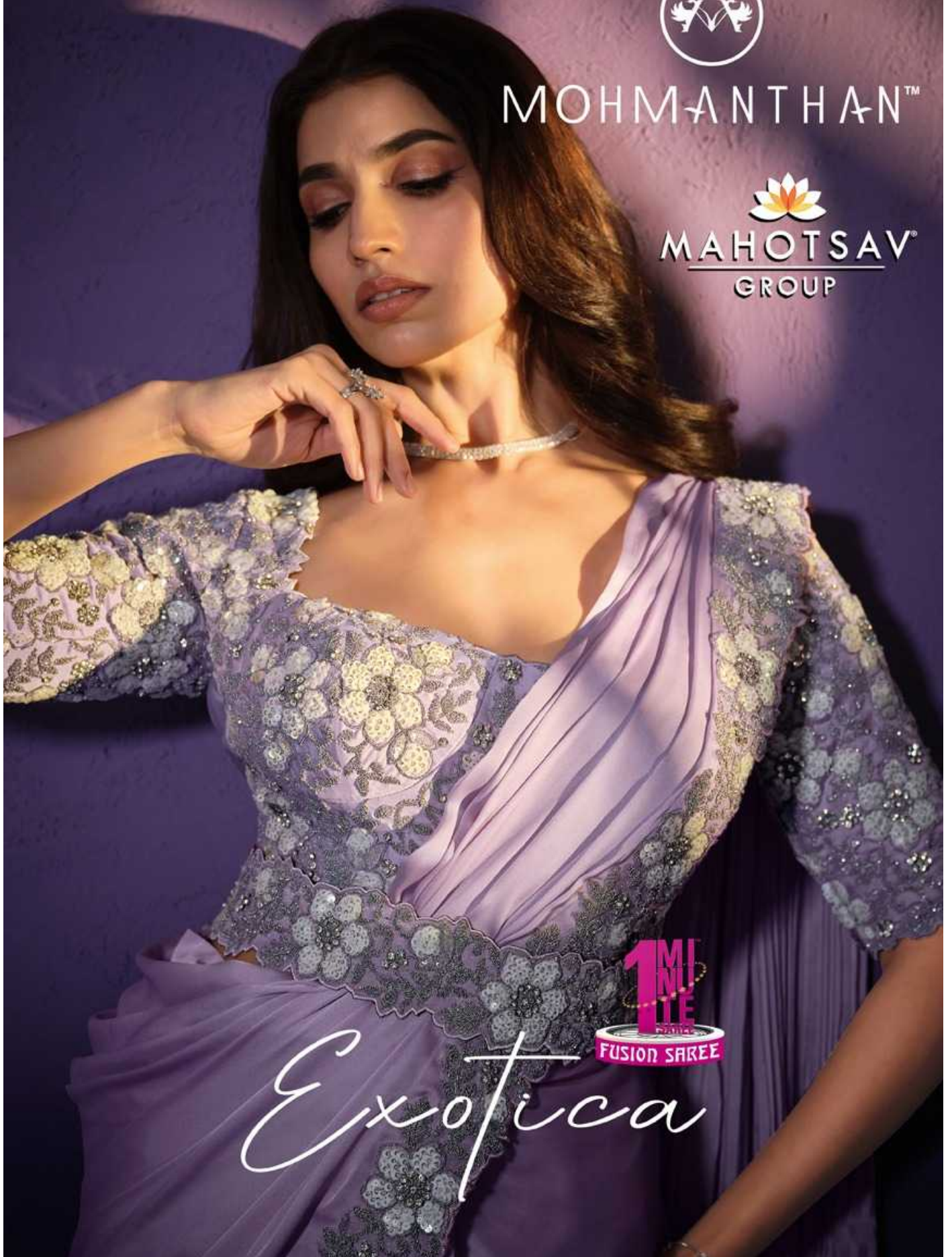




MOHMANTHAN™



MAHOTSAV®
GROUP



Exotica



23805

23806

23807

23808

23809



23815

23816

23817

23818

23819



23810

23811

23812

23813

23814





Essence of
AESTHETICS
Capturing Essence: Aesthetic Symmetry in Every Thread

23810
FABRIC: CREPE SATIN SILK



Essence of
AESTHETICS
Capturing Essence: Aesthetic Symmetry in Every Thread

23810
FABRIC: CREPE SATIN SILK



Infused Designer
CRAFTS



23809
FABRIC: CREPE SATIN SILK

When tradition meets innovation in every stitch of woven designs

Sculpted
SILHOUETTE

Find the definition of a Masterpiece in Motion



23814
FABRIC: CREPE SATIN SILK



MOHMANTHAN™



MAHOTSAV
GROUP

Exotica

FINDING THE EXCELLENCE

Welcome to Exotica, where the tapestry of women's fashion unfolds in a kaleidoscope of elegance and allure.

Exotica is not just a catalog; it's a testament to the artistry woven into every fabric, the precision of every stitch, and the poetry of each design.





Immerse in
VIBRANT HUES

Unleashing the Potential of Artistic Excellence and Style



23807



FABRIC: CREPE SHIMMER SILK



Beauty
EMBLEM

Embrace the bloom, where each petal embodies an exquisite grace and charm



23805
FABRIC: CREPE SATIN SILK

Opulent Satin
LUXURIANCE



A luxurious affair of opulence, design, and desired splendor



23816

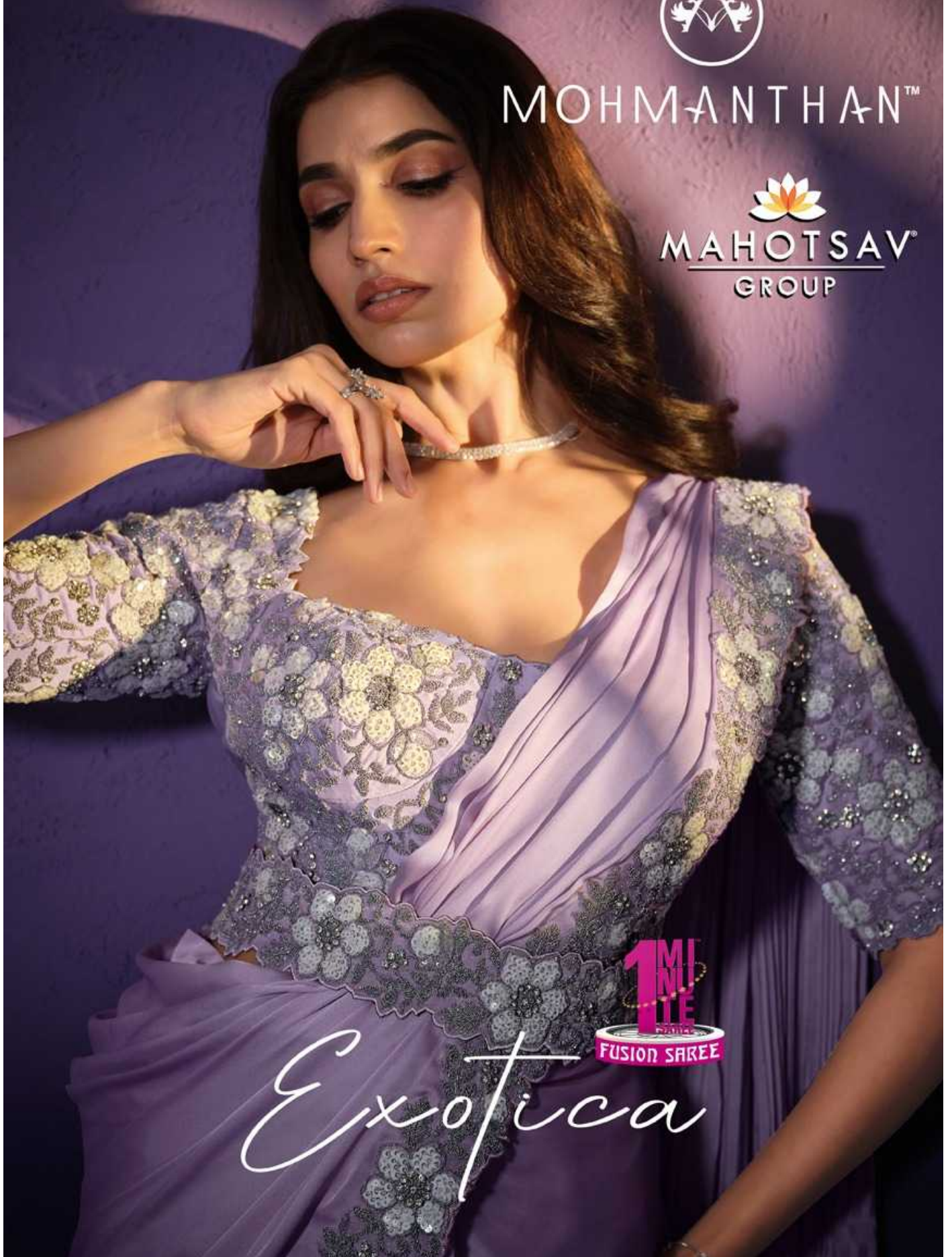
FABRIC: CREPE SATIN SILK



MOHMANTHAN™



MAHOTSAV®
GROUP



Exotica



Get the magic of ruffles embarking on a journey through romance

Gold Blooms
BALLAD

A peek of floral harmony where elegance sings with colour



23815
FABRIC: CREPE SATIN SILK



Sophistication
RENEWED

A timeless resurgence of sophistication and allure



23806

FABRIC: CREPE SATIN SILK



A Fashion Odyssey into the Pulse of Contemporary trends



A full-length view of the same woman in the same maroon saree and floral blouse, standing against a dark purple background. The saree has a subtle floral pattern and a wide floral border. The blouse has a matching floral pattern and a scalloped hemline.

23812

FABRIC: CREPE SATIN SILK

Indira
VARIANTS
Exploring a Spectrum of brilliant colours with contemporary flair



Outline
MERLOT MOOD

Sublime hues set the mood for an expression with style.



23819
FABRIC: PATTERN GEORGETTE





A Femme Fatale's journey through irresistible style dynamics



Silk
SERENADE

The charm of silk is unforgettable. Experience it now.



Harlequin
SPECTACLE



Illuminating style with a spectacle of shimmering elegance



23818



FABRIC: CREPE GEORGETTE SILK



Profusion of
CREATIVITY

Uncover Artistic Mastery from the Abundance of Creative Designs



Dance of the Saree
TEMPTATION
Delicate and tempting, calling your attention

Muse
MUSE

Crafted from Crepe Silk, effortlessly linking tradition with contemporary allure



23808

FABRIC: CREPE SATIN SILK

Intersection of
TRADITION
Timeless Traditions Interwoven with Contemporary Elegance



DESIGN NO	SAREE FABRIC	BLOUSE FABRIC	Work	Jacket & Belt	Saree Type	CUSTZ.(SEMISTITCH/UN-STITCH)	BLOUSE SIZE
23805	Crepe Satin Silk	Malai Satin	Sequence, Cord, Thread Embroidered with Stone Work	NA	Ready to Wear	stitched Blouse	up to 38 Inch with margin of 42 inch
23806	Crepe Satin Silk	Organza Silk	Sequence & Thread Embroidered with Stone and Moti Work	Belt available	Ready to Wear	stitched Blouse	up to 38 Inch with margin of 42 inch
23807	Crepe Shimmer Silk	Crepe Shimmer Silk	Sequence, Cord, Thread Embroidered with Stone & Moti Work	Both available	Ready to Wear	stitched Blouse	up to 38 Inch with margin of 42 inch
23808	Crepe Satin Silk	Georgette	Sequence, Cord, Thread Embroidered with Stone Work	Poncho / Belt available	Ready to Wear	stitched Blouse	up to 38 Inch with margin of 42 inch
23809	Crepe Satin Silk	Organza Silk	Sequence, Cord, Thread Embroidered with Stone & Moti Work	Belt available	Ready to Wear	stitched Blouse	up to 38 Inch with margin of 42 inch
23810	Crepe Satin Silk	Organza Silk	Sequence, Cord, Thread Embroidered with Stone Work	Belt available	Ready to Wear	stitched Blouse	up to 38 Inch with margin of 42 inch
23811	Crepe Satin Silk	Crepe Satin Silk	Sequence, Cord, Thread Embroidered with Stone Work	Belt available	Ready to Wear	stitched Blouse	up to 38 Inch with margin of 42 inch
23812	Crepe Satin Silk	Satin Silk	Sequence, Cord, Thread Embroidered with Stone & Moti Work	Belt available	Ready to Wear	stitched Blouse	up to 38 Inch with margin of 42 inch
23813	Crepe Satin Silk	Crepe Satin Silk	Sequence, Cord, Thread Embroidered	Belt available	Ready to Wear	stitched Blouse	up to 38 Inch with margin of 42 inch
23814	Crepe Satin Silk	Soft Taffeta	Sequence, Cord, Thread Embroidered with Stone Work	Belt available	Ready to Wear	stitched Blouse	up to 38 Inch with margin of 42 inch
23815	Crepe Satin Silk	Malai Satin	Cord & Thread Embroidered with Stone Work	Belt available	Ready to Wear	stitched Blouse	up to 38 Inch with margin of 42 inch
23816	Crepe Satin Silk	Organza Silk	Sequence, Cord, Thread Embroidered with Moti Work	Belt available	Ready to Wear	stitched Blouse	up to 38 Inch with margin of 42 inch
23817	Crepe Satin Silk	Organza Silk	Sequence, Cord, Thread Embroidered with Stone Work	Belt available	Ready to Wear	stitched Blouse	up to 38 Inch with margin of 42 inch
23818	Crepe Georgette Silk	Soft Taffeta	Sequence, Cord, Thread Embroidered with Stone & Moti Work	Belt available	Ready to Wear	stitched Blouse	up to 38 Inch with margin of 42 inch
23819	Pattern Georgette	Malai Satin	Cord, Thread Embroidered with Stone Work	Belt available	Ready to Wear	stitched Blouse	up to 38 Inch with margin of 42 inch

Glamour
REVIVED

Revitalize glamour with a modern twist



MAHOTSAV GROUP PRESENTS
MOHMANTHAN
"Exotica"

DESIGN NO.	DESCRIPTION	PRICE
23805	ONE MINUTE SAREE	3995
23806	ONE MINUTE SAREE	3925
23807	ONE MINUTE SAREE	4205
23808	ONE MINUTE SAREE	2975
23809	ONE MINUTE SAREE	3955
23810	ONE MINUTE SAREE	3785
23811	ONE MINUTE SAREE	3495
23812	ONE MINUTE SAREE	3885
23813	ONE MINUTE SAREE	3155
23814	ONE MINUTE SAREE	3845
23815	ONE MINUTE SAREE	3885
23816	ONE MINUTE SAREE	4205
23817	ONE MINUTE SAREE	4085
23818	ONE MINUTE SAREE	3885
23819	ONE MINUTE SAREE	3325
NOTE : GST@5% WILL BE CHARGED ON THE ABOVE PRICES.		