



FARHANA

VOL-02





“
Wearing an attire is a reflection of our social life, most women prefer to wear socially appropriate clothes. They are always looking for reaction to their clothing. It impacts the mind set of women if others react in a certain way what she is wearing.
”

536-007



FARHANA

VOL-02





Zulfat
DESIGNER FASHION

“
REAL WOMEN ARE EMBRACING THIS TREND.
THEY HAVE BUSY, MULTITASKING LIVES AND
NEED PIECES THAT WORK HARD FOR THEM. WE
MADE TIMELESS, FUNCTIONAL, PIECES THAT
CAN WEAR IN MANY DIFFERENT WAYS... IT'S RE-
LAXING.”

**ENJOY THE LITTLE
THINGS**



536-004



“
Bold, beautiful, and daring—three words
that describe this look. Imagine you—
sell in a soft haze of blue collection. All
eyes will be on you
”

Zulfat[®]
Designer Suits



536-008



THE
IMPLICIT

"Show stealing red never goes out of style, as the colour of love and mischief it remains the quintessential shade of femininity."



“

Bold beautiful and daring three words that describe this look, immerse yourself in a soft haze of blue collection. All eyes will be on you

”



Zulfat®
Designed Suits

536-006

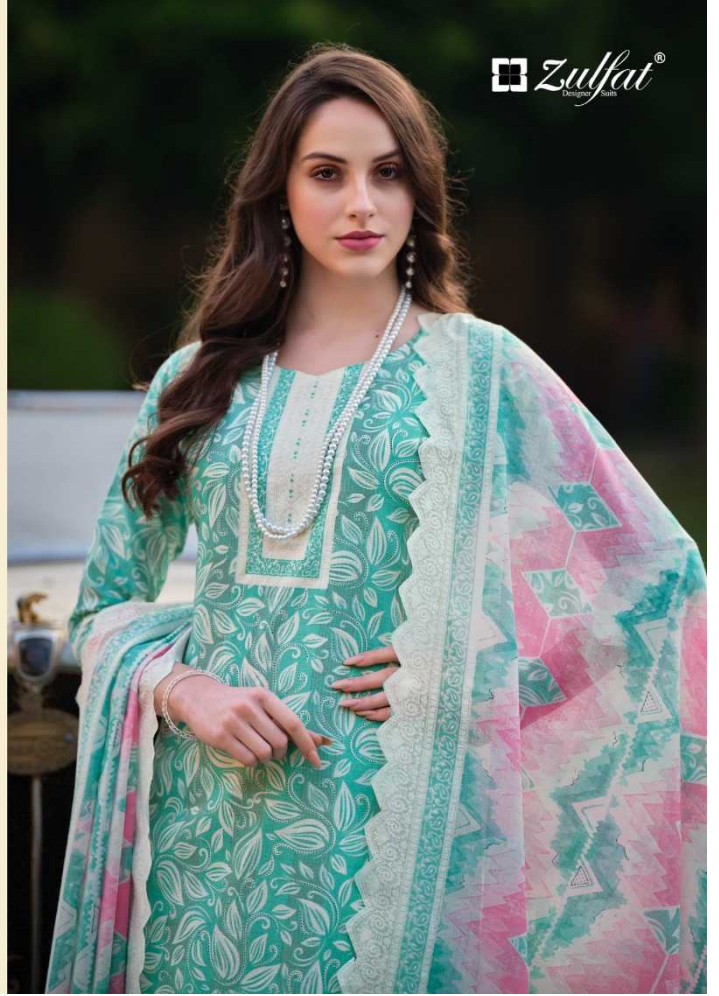
“
REAL WOMEN ARE EMBRACING THIS TREND.
THEY HAVE BUSY, MULTITASKING LIVES AND
NEED PIECES THAT WORK HARD FOR THEM. WE
MADE TIMELESS, FUNCTIONAL PIECES THAT
CAN WEAR IN MANY DIFFERENT WAYS... ITS RE-
LAXING.”

ENJOY THE LITTLE THINGS



536-003

Zulfat
DESIGNER WEAR





STYLE IS
FOREVER

For a decades style on the runway followed a predictable format
but now it's unpredictable...





536-001



536-002



536-003



536-004



536-005



536-006



536-007



536-008





THE NEW IMPLICIT

Show stealing red never goes out of style, as the colour of love and mischief it remains the quintessential shade of femininity. ”



 **Zulfat**[®]
Designs Suits



Zulfat
DESIGNER

THE NEW IMPLICITY

Show stealing red never goes out of style. as the colour of love and mischief it remains the quintessential shade of femininity. ”



536-005

“

Wearing an attire is a reflection of our social life, most women prefer to wear socially appropriate clothes. They are always looking for reaction to their clothing. It impacts the mind set of woman if others react in a certain way what she is wearing.

”



536-002



Zulfat
DESIGNER

TOP

100% PURE COTTON PRINT. (2.50 mtr apx)

DUPATTA

100% PURE COTTON MAL MAL DUPATTA. (2.30 mtr apx)

BOTTOM

100% PURE COTTON SALWAR. (3.00 mtr apx)

