

KIMORA'S
Sohrai

EDEN

COLLECTION AVAILABLE



EDEN

COLLECTION AVAILABLE



B

1

A woman with dark curly hair and glasses stands in profile, looking at a bouquet of purple flowers. She is wearing a long, flowing purple dress with a blue floral pattern and a wide blue border. She is also wearing black high-heeled sandals. To her left is a round table covered with a white cloth, featuring several white ceramic vases of different shapes and sizes, some containing purple flowers. The background is a plain, light-colored wall.

KIMORA'S
Sohni™

EDEN

COLLECTION AVAILABLE

KIMORA'S
Sohai

EDEN

COLLECTION AVAILABLE

KIMORA *Sohai* EDEN

TOP

PURE COTTON LAWN WITH DIGITAL PRINT
EMBROIDERY NECKLINE AND SCALLOPED
LACE ON HEMLINE AND SLEEVE

DUPATTA

PURE BAMBER MULMUL WITH
DIGITAL PRINT AND FOUR SIDE SCALLOPED LACE

BOTTOM

PURE COTTON

kimora®



KIMORA'S
Sohai



371



372



373



374

EDEN

KIMORA'S
Sohni[™]

K







The Floral Bliss

evoke your ethnic ethos with newest trends this season.

Aspire to be a soul that loves, lives and wonders everyday!

— ■ —
374

The Floral Bliss

Evoke your ethnic ethos with newest trends this season.
Aspire to be a soul that loves, lives and wonders everyday!

374







The Floral Bliss

Evoke your ethnic ethos with newest trends this season. Aspire to be a soul that loves, lives and wonders everyday!

374

Simply Beautiful

Sometime beauty lies in the most simplest
of things. Let your simple style make your impression beautiful.



1L





Pastel Saga

Pastel is fashionista's favourite pick this season;
embrace sheer elegance
and add poise to your personality with pastel.



“



B





B

KIMORA'S
Sohrai
372





Flower Power

A fresh wave of florals found their way onto the runway.
Embrace statement-making look with delicate blooms.

372



“K



Flower Power

a fresh wave of florals found their way onto the runway. embrace statement making look with delicate blooms.



B

KIMORA'S
Sohrai

371

1



New Season

the new season's trend is all about grace,
confidence and style.

”





O “

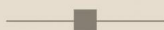


K

Style Speak

clothing is a form of self-expression

let these alluring prints give hints about who you are.





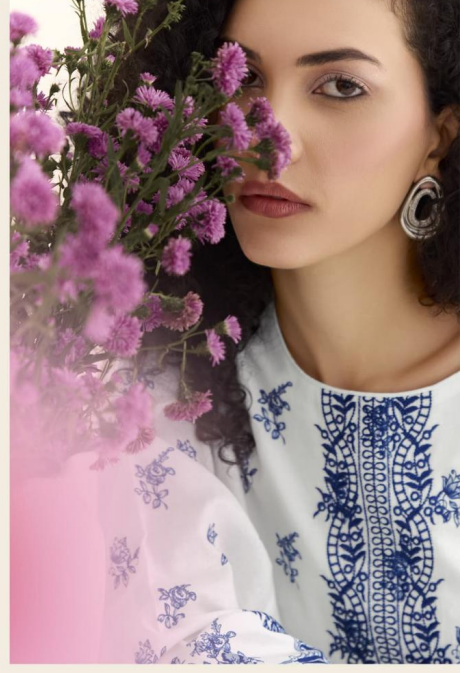
Style Speak

Clothing is a form of self-expression

let these alluring prints give hints about who you are.

evoke your ethnic ethos
with newest trends this season.
aspire to be a
soul that loves, lives and
wonders everyday!

“





KIMORA'S
Sohmi™

EDEN