

  
Rajpath<sup>TM</sup>  
*The Way Of Style*

Airaavat Patola



Rajpath™  
*The Way to Style*  
Patola Silk

Stay in Style

COLOURFUL BRIGHT AND AWASH  
IN SPLENDOR UNMATCHED  
THESE DRESSES DO YOUR CHARM  
JUSTICE LIKE NONE OTHER  
FILL THE WORLD AROUND YOU  
WITH BRIGHTNESS UNBOUND.







Rajpath™  
The Way Of Style  
Patola Silk  
507

THE CLASSIC SOUTH INDIAN STRIPES ARE GIVEN A MAGIC TOUCH WITH A DASH OF CONTEMPORARINESS WEAR IN ON AN EVENING AFFAIR WITH ALAN TWIRLED YOUR FINGERTIPS.





Raj path™  
*The Way Of Style*  
Patola Silk



MUTED GLOD FLAMES ADLAZE AGAINST THE PEARL WHITE BACKGROUND LOOK AS DIVINE AS  
A MORNING PRAYER EMBRACE THE BEAUTY OF PURITY.



Rajpath™  
Patola Silk  
509







Walk the talk

THIS SEASON YOUR LOOK GETS BETTER DEFINITION  
WITH JUST A LITTLE ATTENTION TO DETAIL.



Rajpath™  
the way it's done  
Patola Silk  
504





Rajpath™  
Patola Silk



Classical Symphony

THE CLASSIC COLOUR COMBINATION STRATEGICALLY DESIGNED WITH AN INTRINSIC WEAVE OF KALAMKARI PRINT GIVES A CONTEMPORARY EDGE TO THIS PIECE. AN IDEAL PIECE FOR EVENING AFFAIRS.





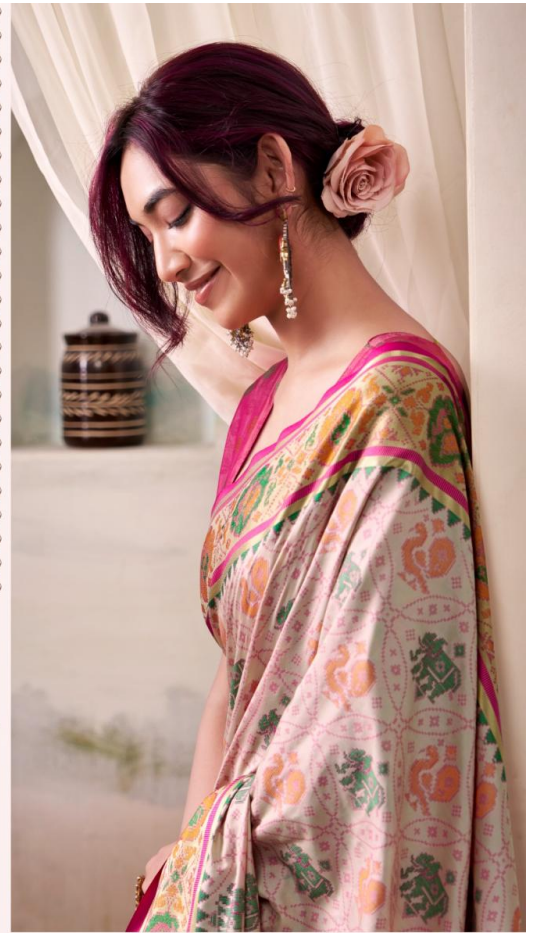




Rajpath™  
Patola Silk  
505

### Pure Fiesta

MUTED GLOID FLAMES ADLAZE AGAINST  
THE PEARL WHITE BACKGROUND LOOK  
AS DIVINE AS A MORNING PRAYER.  
EMBRACE THE BEAUTY OF PURITY.



Rajpath™  
The Way Of Style  
Patola Silk



MUTED GLOD FLAMES ALLAZE AGAINST THE PEARL WHITE BACKGROUND LOOK AS DIVINE AS  
A MORNING PRAYER. EMBRACE THE BEAUTY OF PURITY.







Rajpath™  
*The Way Of Style*

Patola Silk

It's a class

FASHION AND STYLE ALWAYS DEPEND ON GOOD  
COLOR AND FANTASTIC COMBINATION OF SHADES,  
BUT AS PER OPINION EVERY COLOR SAYS YOUR  
MOOD AND REFLECTS YOUR PERSONALITY.  
SO WE CREATE ALL THE SHADES FOR ENHANCE  
YOUR BEAUTY.



  
Rajpath<sup>TM</sup>  
*The Way Of Style*

Airaavat Patola





Rajpath™  
*The way of life*  
Patola Silk

Walk the talk  
THIS REASON YOUR LOOK GETS BETTER DEFINITION  
WITH JUST A LITTLE ATTENTION TO DETAIL.